

Product datasheet for PH312365

PYGM (NM_005609) Human Mass Spec Standard

Product data:

Product Type:	Mass Spec Standards
Description:	PYGM MS Standard C13 and N15-labeled recombinant protein (NP_005600)
Species:	Human
Expression Host:	HEK293
Expression cDNA Clone or AA Sequence:	RC212365
Predicted MW:	96.9 kDa
Protein Sequence:	>RC212365 representing NM_005609 Red=Cloning site Green=Tags(s)

MSRPLSDQEKRKQISVRGLAGVENVTELKKNFNRHLHFTLVKDRNVATPRDYFFALAHTVRDHLVGRWIR
TQQHYEYKDPKRIYYLSLEFYMGRTLQNTMVNLALENACDEATYQLGLDMEELEEIEEDAGLGNGLGRL
AACFLDSMATLGLAAYGYGIRYEFGIFNQKISGGWQMEEADDWLRYPNPWEKARPEFTLPVHFYGHVEHT
SQGAKWVDTQVVLAMPYDTPVPGYRNNVNTMRLWSAKAPNDFNLKDFNVGGYIQAVLDRNLAENISRVL
YPNDNFFEGKELRLKQEFVVAATLQDIIRRFKSSKFGCRDPVRTNFDAPDKVAIQLNDRNLAENISRVL
MRILVDLERMDWDKAWDVTVRTCAYTNHTVLPALERWVHLLTLLPRHLQIIYEINQRFLNRVAAAF
GDVDRRLRRMSLVEEGAVKRINMAHLCIAGSHAVNGVARIHSEILKKTIFKDFYELEPHKFQNKNTGITPR
RWLVLCPGLAEVIAERIGEDFISDLQRLKLLSFVDDEAFIRDVAKVKQENKLFKAAYLERYKVHINP
NSLFDIQVKRIHEYKRQLLNCLHVITLYNRIKREPKNFFVPRTVMIGGKAAPGYHMAKMIIRLVTAI
GDIVNHDPVAGDRLRVIFLENYRVS LAEKVIPAADLSEQISTAGTEASGTGNMKFMLNGALTIGTMDGANVEM
AEEAGEENFFIFGMRVEDVDKLDQRGYNAQEYYDRIPELRQVIEQLSSGFFSPKQPDFKDIVNMLMHH
RFKVFADYEDYIKCQEKVSALYKNPREWTRMIRNIATSGKFSDDRTIAQYAREIHWGVEPSRQLPAPDE
AI

TRTRPLEQKLI SEEDLAANDILDYKDDDDKV

Tag:	C-Myc/DDK
Purity:	> 80% as determined by SDS-PAGE and Coomassie blue staining
Concentration:	>0.05 µg/µL as determined by microplate BCA method
Labeling Method:	Labeled with [U- ¹³ C ₆ , ¹⁵ N ₄]-L-Arginine and [U- ¹³ C ₆ , ¹⁵ N ₂]-L-Lysine
Buffer:	25 mM Tris-HCl, 100 mM glycine, pH 7.3
Storage:	Store at -80°C. Avoid repeated freeze-thaw cycles.
Stability:	Stable for 3 months from receipt of products under proper storage and handling conditions.



[View online »](#)

RefSeq: [NP_005600](#)

RefSeq Size: 3447

RefSeq ORF: 2526

Synonyms: GSD5

Locus ID: 5837

UniProt ID: [P11217](#)

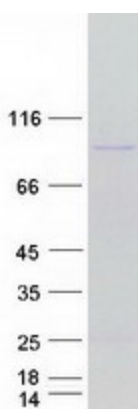
Cytogenetics: 11q13.1

Summary: This gene encodes a muscle enzyme involved in glycogenolysis. Highly similar enzymes encoded by different genes are found in liver and brain. Mutations in this gene are associated with McArdle disease (myophosphorylase deficiency), a glycogen storage disease of muscle. Alternative splicing results in multiple transcript variants.[provided by RefSeq, Sep 2009]

Protein Families: Druggable Genome

Protein Pathways: Insulin signaling pathway, Starch and sucrose metabolism

Product images:



Coomassie blue staining of purified PYGM protein (Cat# [TP312365]). The protein was produced from HEK293T cells transfected with PYGM cDNA clone (Cat# [RC212365]) using MegaTran 2.0 (Cat# [TT210002]).