

Product datasheet for PH312334

SHISA3 (NM_001080505) Human Mass Spec Standard

Product data:

Product Type:	Mass Spec Standards
Description:	SHISA3 MS Standard C13 and N15-labeled recombinant protein (NP_001073974)
Species:	Human
Expression Host:	HEK293
Expression cDNA Clone or AA Sequence:	RC212334
Predicted MW:	25.7 kDa
Protein Sequence:	>RC212334 protein sequence Red=Cloning site Green=Tags(s) MRALLALCLLLGCLRWGPAGAQQSGEYCHGWVDVQGNHYHEGFQCPEDFDLDTATICCGSCALRYCCAAAD ARLEQGGCTNDRRELEHPGITAQPVYVPFLIVGSIFIAFIIILGSVVAIYCCTCLRPKEPSQQPIRFSLRS YQTETLPMILTSTSPRAPSRSSTATSSSSTGGSIRRFSFARAEPGLVSPPPPYYTTSHSIHLAQPSGF LVSPQYFAYPLQQEPPLPGKSCPDFSSS TRTRPLEQKLI SEEDLAANDILDYKDDDDKV
Tag:	C-Myc/DDK
Purity:	> 80% as determined by SDS-PAGE and Coomassie blue staining
Concentration:	>0.05 µg/µL as determined by microplate BCA method
Labeling Method:	Labeled with [U- ¹³ C ₆ , ¹⁵ N ₄]-L-Arginine and [U- ¹³ C ₆ , ¹⁵ N ₂]-L-Lysine
Buffer:	25 mM Tris-HCl, 100 mM glycine, pH 7.3
Storage:	Store at -80°C. Avoid repeated freeze-thaw cycles.
Stability:	Stable for 3 months from receipt of products under proper storage and handling conditions.
RefSeq:	NP_001073974
RefSeq Size:	1971
RefSeq ORF:	714
Synonyms:	hShisa3
Locus ID:	152573
UniProt ID:	A0PIX4



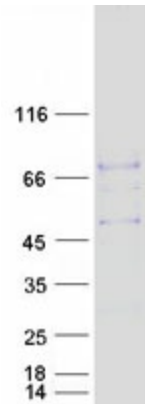
[View online »](#)

Cytogenetics: 4p13

Summary: This gene encodes a single-transmembrane protein which is one of nine members of a family of transmembrane adaptors that modulate both WNT and FGF signaling by blocking the maturation and transport of their receptors to the cell surface. Members of this family contain an N-terminal cysteine-rich domain with a distinct cysteine pattern, a single transmembrane domain, and a C-terminal proline-rich, low complexity region. The encoded protein acts as a tumor suppressor by accelerating beta-catenin degradation. [provided by RefSeq, Jul 2017]

Protein Families: Transmembrane

Product images:



Coomassie blue staining of purified SHISA3 protein (Cat# [TP312334]). The protein was produced from HEK293T cells transfected with SHISA3 cDNA clone (Cat# [RC212334]) using MegaTran 2.0 (Cat# [TT210002]).