

Product datasheet for PH312332

TIP30 (HTATIP2) (NM_001098522) Human Mass Spec Standard

Product data:

Product Type:	Mass Spec Standards
Description:	HTATIP2 MS Standard C13 and N15-labeled recombinant protein (NP_001091992)
Species:	Human
Expression Host:	HEK293
Expression cDNA Clone or AA Sequence:	RC212332
Predicted MW:	27.1 kDa
Protein Sequence:	>RC212332 protein sequence Red=Cloning site Green=Tags(s) MAETEALSKLREDFRMQNKSVFILGASGETGRVLLKEILEQGLFSKVTLIGRRKLTDFEEAYKNVNQEVV DFEKLDDYASAFQGHVGFCCCLGTTRGKAGAEGFVRVDRDYVLLKSAELAKAGGCKHFNLLSSKGADKSSN FLYLQVKGEVEAKVEELKFDREYSVFRPGVLLCDRQESRPGEWLVKRFFGSLPDSWARGHSPVVTVVRAM LNNVVRPRDKQMELLENKAIHDLGKAHGSLKP TRTRPLEQKLISEEDLAANDILDYKDDDDKV
Tag:	C-Myc/DDK
Purity:	> 80% as determined by SDS-PAGE and Coomassie blue staining
Concentration:	>0.05 µg/µL as determined by microplate BCA method
Labeling Method:	Labeled with [U- ¹³ C ₆ , ¹⁵ N ₄]-L-Arginine and [U- ¹³ C ₆ , ¹⁵ N ₂]-L-Lysine
Buffer:	25 mM Tris-HCl, 100 mM glycine, pH 7.3
Storage:	Store at -80°C. Avoid repeated freeze-thaw cycles.
Stability:	Stable for 3 months from receipt of products under proper storage and handling conditions.
RefSeq:	NP_001091992
RefSeq Size:	1719
RefSeq ORF:	726
Synonyms:	CC3; SDR44U1; TIP30
Locus ID:	10553
UniProt ID:	Q9BUP3



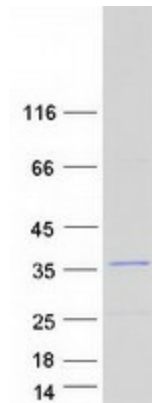
[View online »](#)

Cytogenetics: 11p15.1

Summary: Oxidoreductase required for tumor suppression. NADPH-bound form inhibits nuclear import by competing with nuclear import substrates for binding to a subset of nuclear transport receptors. May act as a redox sensor linked to transcription through regulation of nuclear import. Isoform 1 is a metastasis suppressor with proapoptotic as well as antiangiogenic properties. Isoform 2 has an antiapoptotic effect.[UniProtKB/Swiss-Prot Function]

Protein Families: Druggable Genome

Product images:



Coomassie blue staining of purified HTATIP2 protein (Cat# [TP312332]). The protein was produced from HEK293T cells transfected with HTATIP2 cDNA clone (Cat# [RC212332]) using MegaTran 2.0 (Cat# [TT210002]).