

Product datasheet for PH312316

NPTX1 (NM_002522) Human Mass Spec Standard

Product data:

Product Type:	Mass Spec Standards
Description:	NPTX1 MS Standard C13 and N15-labeled recombinant protein (NP_002513)
Species:	Human
Expression Host:	HEK293
Expression cDNA Clone or AA Sequence:	RC212316
Predicted MW:	47.12 kDa
Protein Sequence:	>RC212316 representing NM_002522 Red=Cloning site Green=Tags(s)

MPAGRAARTCALLALCCLLGAGAQDFGPTRFICTSVPVDADMCAASVAAGGAEELRSSVLQLRETVLQQKE
TILSQKETIRELTAKLGRCESQSTLDPGAGEARAGGGRKQPGSGKNTMGDLSRTPAAETLSLQGTLSL
KTRLENLEQYSRLNSSSQTNSLKDLLQSKIDELERQVLSRVNTLEEGKGGPRNDTEERVKIETALTSLHQ
RISELEKQKDNRPQDKFQLTFPLRTNYMAYKVKKSLPEMYAFTVCMWLKSSATPGVGTPTFSYAVPGQAN
ELVLIWGNPMEILINDKVAKLPFVINDGKWHHICVTWTRDGVWEAYQDGTQGGSGENLAPYHPKPKQ
GVLVLGQEQDTLGGGFATQAFVVELAHFNIWDRKLTPEVYNLATCSTKALSGNVIWAESHIEIYGGA
TKWTFEACRQIN

TRTRPLEQKLISEEDLAANDILDYKDDDDKV

Tag:	C-Myc/DDK
Purity:	> 80% as determined by SDS-PAGE and Coomassie blue staining
Concentration:	>0.05 µg/µL as determined by microplate BCA method
Labeling Method:	Labeled with [U- ¹³ C ₆ , ¹⁵ N ₄]-L-Arginine and [U- ¹³ C ₆ , ¹⁵ N ₂]-L-Lysine
Buffer:	25 mM Tris-HCl, 100 mM glycine, pH 7.3
Storage:	Store at -80°C. Avoid repeated freeze-thaw cycles.
Stability:	Stable for 3 months from receipt of products under proper storage and handling conditions.
RefSeq:	<u>NP_002513</u>
RefSeq Size:	5441
RefSeq ORF:	1296
Synonyms:	NP1



[View online »](#)

Locus ID: 4884

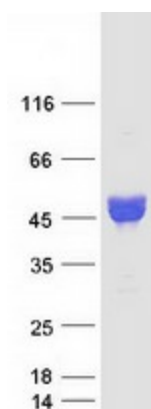
UniProt ID: [Q15818](#)

Cytogenetics: 17q25.3

Summary: NPTX1 is a member of the neuronal pentraxin gene family. Neuronal pentraxin 1 is similar to the rat NP1 gene which encodes a binding protein for the snake venom toxin taipoxin. Human NPTX1 mRNA is exclusively localized to the nervous system. [provided by RefSeq, Jul 2008]

Protein Families: Secreted Protein

Product images:



Coomassie blue staining of purified NPTX1 protein (Cat# [TP312316]). The protein was produced from HEK293T cells transfected with NPTX1 cDNA clone (Cat# [RC212316]) using MegaTran 2.0 (Cat# [TT210002]).