

Product datasheet for PH312315

ENTPD7 (NM_020354) Human Mass Spec Standard

Product data:

Product Type:	Mass Spec Standards
Description:	ENTPD7 MS Standard C13 and N15-labeled recombinant protein (NP_065087)
Species:	Human
Expression Host:	HEK293
Expression cDNA Clone or AA Sequence:	RC212315
Predicted MW:	69 kDa
Protein Sequence:	>RC212315 protein sequence Red=Cloning site Green=Tags(s)

MARISFSYLCPASWYFTVPTVSPFLRQRFVAFGLGLFFISCLLLLMLIIDFRHWSASLPRDRQYERYLARVG
ELEATDTEPNLNYGLVVDGSSGSRIFVYFWRPHNGNPHDLLDIKQMRDRNSQPVVKKIKPGISAMADT
PEHASDYLRPLLSFAAAHVPVKKHKETPLYILCTAGMRLPERKQLAILADLVKDLPLEFDLFSQSQAE
VISGKQEGVYAWIGINFVLGRFDHEDESDAEATQELAAGRRTVGILDMGGASLQIAYEVPSTSVLPAK
QEEAAKILLAEFNLGCDVQHTHEHYRVYVTTFLGFGGNFARQRYEDLVNETLNKNRLLGQKTGLSPDNP
FLDPCLPVGLTDVVERNSQVLHVRGRGDWVSCGAMLSPLLARSNTSQASLNGIYQSPIDFNNSEFYGFSE
FFYCTEDVLRIGGRYHGPTFAKAAQDYCGMAWSVLTQRFKNGLFS SHADEHRLKYQCFKSAWYQVLHEG
FHFPPYDYNLRTAQLVYDREVQWTLGAILYKTRFLPLRDLRQEGVRQAHGSWFRLSFVYNHYLFFACILV
VLLAIFLYLLRLRRIHHRQTRASAPDLLWLEEVVPMMGVQVGP

TRTRPLEQKLI SEEDLAANDILDYKDDDDKV

Tag:	C-Myc/DDK
Purity:	> 80% as determined by SDS-PAGE and Coomassie blue staining
Concentration:	>0.05 µg/µL as determined by microplate BCA method
Labeling Method:	Labeled with [U- 13C6, 15N4]-L-Arginine and [U- 13C6, 15N2]-L-Lysine
Buffer:	25 mM Tris-HCl, 100 mM glycine, pH 7.3
Storage:	Store at -80°C. Avoid repeated freeze-thaw cycles.
Stability:	Stable for 3 months from receipt of products under proper storage and handling conditions.
RefSeq:	NP_065087
RefSeq Size:	8564
RefSeq ORF:	1812



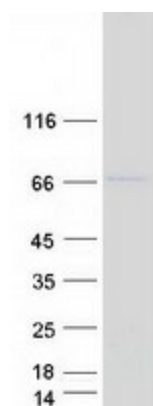
[View online »](#)

Synonyms: LALP1
Locus ID: 57089
UniProt ID: [Q9NQZ7](#)
Cytogenetics: 10q24.2
Summary:

This gene encodes a purine-converting ectoenzyme which belongs to the ecto-nucleoside triphosphate diphosphohydrolase (E-NTPDase) family. The encoded protein hydrolyzes extracellular nucleoside triphosphates (UTP, GTP, and CTP) to nucleoside monophosphates as part of a purinergic signaling pathway. It contains two transmembrane domains at the N- and C-termini and a large, hydrophobic catalytic domain located in between. This gene affects oxidative stress as well as DNA damage and is a mediator of senescence. [provided by RefSeq, Mar 2017]

Protein Families: Transmembrane

Product images:



Coomassie blue staining of purified ENTPD7 protein (Cat# [TP312315]). The protein was produced from HEK293T cells transfected with ENTPD7 cDNA clone (Cat# [RC212315]) using MegaTran 2.0 (Cat# [TT210002]).