

Product datasheet for PH312307

BMP6 (NM_001718) Human Mass Spec Standard

Product data:

Product Type:	Mass Spec Standards
Description:	BMP6 MS Standard C13 and N15-labeled recombinant protein (NP_001709)
Species:	Human
Expression Host:	HEK293
Expression cDNA Clone or AA Sequence:	RC212307
Predicted MW:	57 kDa
Protein Sequence:	>RC212307 representing NM_001718 Red=Cloning site Green=Tags(s)
	MPGLGRRAQWLCWWGLLCSCCGPPPLRPPLAAAAAAAAAGGQLLDGGSPGRTEQPPSPQSSGFLYRR LKTQEKREMQKEILSVLGLPHRPRPLHGLQQPQPALRQQEEQQQQQLPRGEPPPGRLKSAPLFMLDL NAL SADNDEGDGASEGERQQSWPHEAASSQRRQPPPGAHPLNRKSLAPGSGSGGASPLTSAQDSAFLN DADMVMSFVNLVEYDKEFSRQRHHKEFKFNLSQIPEGEVVTAAEFRIYKDCVMGSFKNQTLISIYQVL QEHQHRSDLFLLDTRVVWASEEGWLEFDITATSNLWVVTQHNMGLQLSVVTRDGVHVHPRAAGLVGRD GPYDKQPFMVAFFKVSEVHVTRTRSASSRRRQSRNRSTQSDVARVSSASDYNSELKTACRKHLYVS FQDLGWQDWIIAPKGYAANYCDGECFPLNAHMNATNHAIVQTLVHLMNPEYVVKPCCAPTKLNAISVLY FDDNSNVILKKYRNMVVRACGCH
	TRTRPLEQKLISEEDLAANDILDYKDDDDKV
Tag:	C-Myc/DDK
Purity:	> 80% as determined by SDS-PAGE and Coomassie blue staining
Concentration:	>0.05 µg/µL as determined by microplate BCA method
Labeling Method:	Labeled with [U- 13C6, 15N4]-L-Arginine and [U- 13C6, 15N2]-L-Lysine
Buffer:	25 mM Tris-HCl, 100 mM glycine, pH 7.3
Storage:	Store at -80°C. Avoid repeated freeze-thaw cycles.
Stability:	Stable for 3 months from receipt of products under proper storage and handling conditions.
RefSeq:	<u>NP_001709</u>
RefSeq Size:	2943
RefSeq ORF:	1539



[View online »](#)

Synonyms: VGR; VGR1

Locus ID: 654

UniProt ID: [P22004](#), [Q4VBA3](#), [B4DUF7](#)

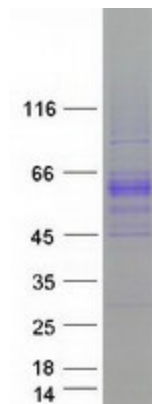
Cytogenetics: 6p24.3

Summary: This gene encodes a secreted ligand of the TGF-beta (transforming growth factor-beta) superfamily of proteins. Ligands of this family bind various TGF-beta receptors leading to recruitment and activation of SMAD family transcription factors that regulate gene expression. The encoded preprotein is proteolytically processed to generate each subunit of the disulfide-linked homodimer. This protein regulates a wide range of biological processes including iron homeostasis, fat and bone development, and ovulation. Differential expression of this gene may be associated with progression of breast and prostate cancer. Mutations in this gene may be associated with iron overload in human patients. [provided by RefSeq, Jul 2016]

Protein Families: Adult stem cells, Cancer stem cells, Druggable Genome, Embryonic stem cells, ES Cell Differentiation/IPS, Induced pluripotent stem cells, Secreted Protein, Stem cell relevant signaling - TGFb/BMP signaling pathway

Protein Pathways: Hedgehog signaling pathway, TGF-beta signaling pathway

Product images:



Coomassie blue staining of purified BMP6 protein (Cat# [TP312307]). The protein was produced from HEK293T cells transfected with BMP6 cDNA clone (Cat# [RC212307]) using MegaTran 2.0 (Cat# [TT210002]).