

Product datasheet for PH312292

MCM4 (NM_005914) Human Mass Spec Standard

Product data:

Product Type:	Mass Spec Standards
Description:	MCM4 MS Standard C13 and N15-labeled recombinant protein (NP_005905)
Species:	Human
Expression Host:	HEK293
Expression cDNA Clone or AA Sequence:	RC212292
Predicted MW:	96.4 kDa
Protein Sequence:	>RC212292 representing NM_005914 Red=Cloning site Green=Tags(s)

MSSPASTPSRRGSRRGRATPAQTPRSEDARSSPSQRRRGEDSTSTGELQPMPTSPGVDLQSPAAQDVLFS
SPPQMHSSAIPLDFDVSSPLTYGTPSSRVEGTPRSGVGRGTPVRQRPDLGSAQKGLQVDLQSDGAAAEDIV
ASEQSLGQKLVWGTDVNVAACKENFQRFLQRFIDPLAKEEENVGIDITEPLYMQRLGEINVIGEPFLNV
NCEHIKSFDKNL YRQLISYPQEVIPTFDMAVNEIFFDRYPDSILEHQIQVRPFNALKTKNMRNLNPEDID
QLITISGMVIRTSQLIPEMQEAFFQCQVCAHTTRVEMDRGRIAEPSVCGRCHTTTHSMALIHNRSLFSDKQ
MIKLQESPEDMPAGQTPHTVILFAHNDLVKQVQPGDRVNVGTIYRAVPIRVNPRVSNVKSVMYKTHIDVIH
YRKTDARLHGLDEEAEQKLFSEKRVLLKELSRKPDIERLASALAPSIYEHEDIKKGILLQLFGGTRK
DFSHTGRGKFRAEINILLCGDPGTSKSQLLQYVYNLVPRGQYTSKGSSAVGLTAYVMKDPETRLVLQT
GALVLSDNIGICIDEFDKMNESTRSVLHEVMEQQTLSIAKAGIICQLNARTSVLAAAANPIESQWNPCKTT
IENIQLPHTLLSRFDLIFLMLDPQDEAYDRRLAHLVALYYQSEEQAEELLDMAVLKDYIAYAHSTIMP
RLSEEASQALIEAYVDMRKIGSSRMVSAAYPRQLESLIRLAEAHAKVRLSNKVEAIDVEEAKRLHREALK
QSATDPRGTGIVDISILTTGMSATSRKRKEELAEALKKILSKGKTPALKYQQLFEDIRGQSDIAITKDMF
EALRALADDDFLTVTGTVRL

TRTRPLEQKLI SEEDLAANDILDYKDDDDKV

Tag:	C-Myc/DDK
Purity:	> 80% as determined by SDS-PAGE and Coomassie blue staining
Concentration:	>0.05 µg/µL as determined by microplate BCA method
Labeling Method:	Labeled with [U- ¹³ C ₆ , ¹⁵ N ₄]-L-Arginine and [U- ¹³ C ₆ , ¹⁵ N ₂]-L-Lysine
Buffer:	25 mM Tris-HCl, 100 mM glycine, pH 7.3
Storage:	Store at -80°C. Avoid repeated freeze-thaw cycles.
Stability:	Stable for 3 months from receipt of products under proper storage and handling conditions.



[View online »](#)

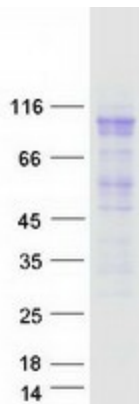
RefSeq:	NP_005905
RefSeq Size:	3533
RefSeq ORF:	2589
Synonyms:	CDC21; CDC54; hCdc21; IMD54; NKCD; NKGCD; P1-CDC21
Locus ID:	4173
UniProt ID:	P33991 , B4DLA6
Cytogenetics:	8q11.21

Summary: The protein encoded by this gene is one of the highly conserved mini-chromosome maintenance proteins (MCM) that are essential for the initiation of eukaryotic genome replication. The hexameric protein complex formed by MCM proteins is a key component of the pre-replication complex (pre_RC) and may be involved in the formation of replication forks and in the recruitment of other DNA replication related proteins. The MCM complex consisting of this protein and MCM2, 6 and 7 proteins possesses DNA helicase activity, and may act as a DNA unwinding enzyme. The phosphorylation of this protein by CDC2 kinase reduces the DNA helicase activity and chromatin binding of the MCM complex. This gene is mapped to a region on the chromosome 8 head-to-head next to the PRKDC/DNA-PK, a DNA-activated protein kinase involved in the repair of DNA double-strand breaks. Alternatively spliced transcript variants encoding the same protein have been reported. [provided by RefSeq, Jul 2008]

Protein Families: Stem cell - Pluripotency, Transcription Factors

Protein Pathways: Cell cycle, DNA replication

Product images:



Coomassie blue staining of purified MCM4 protein (Cat# [TP312292]). The protein was produced from HEK293T cells transfected with MCM4 cDNA clone (Cat# [RC212292]) using MegaTran 2.0 (Cat# [TT210002]).