

Product datasheet for PH312279

SEZ6 (NM_178860) Human Mass Spec Standard

Product data:

Product Type:	Mass Spec Standards
Description:	SEZ6 MS Standard C13 and N15-labeled recombinant protein (NP_849191)
Species:	Human
Expression Host:	HEK293
Expression cDNA Clone or AA Sequence:	RC212279
Predicted MW:	107.2 kDa
Protein Sequence:	>RC212279 representing NM_178860 Red=Cloning site Green=Tags(s)

MRPVALLLLPSLLALLAHLGSLSEAPTGVKQAPGIEETDGETAAPTPEQPERGVHFVTTAPTLKLLNHH
 PLLEEFLEQEGLEKGDDEELRPALPFQDPAPFTPSPLPRLANQDSRPVFTSPTPAMA AVPTQPQSKEGPW
 SPESESPMLRITAPLPPGSPMAVPTLGPGEIASTTPPSRAWPTQEGPGDMGRPWVAEVVSQGAGIGIQG
 TITSSTASGDDEETTTTTIITTTITTTVQTPGPCSWNFSGPEGLSDPTDLSSPTDVGDCFFYISVYYPG
 YGVEIKVQNISLREGETVTVGLGGPDPLPLANQSFLLRGQVIRSPHQAALRFQSLPPPAGPGTFHFHY
 QAYLLSCHFRPPAYGDVTVSLHPGGSARFHCATGYQLKARHLTCLNATQPFWDSKEPVCAACGGVI
 RNATTGRIVSPGFPNGYSNNLTCHWLLLEAPEGQRLHLHFEKVSLEAEDDRLIIRNGDNVEAPPVYDSYEV
 EYLPPIEGLLSSGKHFFVELSTDSSGAAAGMALRYEAFQQGHCEYEPFVKYGNFSSSTPTYPVGTTFVEFSCD
 PGYTLQGSIIIECVDPHPQWNETEPACRAVCSGEITDSAGVVLSPNWPEPYGRQDCI WGVHVEEDKR
 IMLDIRVLRIGPGDVLTFYDGDILTARVLGQYSGPRSHFKLFTSMADVTIQFQSDPGTSVLGYQQGFVIH
 FFEVPRNDTCPELPEIPNGWKSPSQPELVHGTVVTYQCYPGYQVVGSSVLMCQWDLT WSEDLPSCQRVTS
 CHDPPGDVEHSRRLISSPKFPVAGTVQYICDQGFVLMGSSILTCHDRQAGSPKWSDRAPKCLLEQLKPCHG
 LSAPENGARSPEQLHPAGATIHFSAPGYVLLKQASIKCVPGHPSHSDPPPICRAASLDGFYNSRSLD
 VAKAPAASTLDAAHIAAIFLPLVAMVLLVGGVYFYF SRLQ GKSSLQLPRPRPRPNRITIESAFDNPT
 YETGSLSFAGDERI

TRTRPLEQKLI SEEDLAANDILDYKDDDDKV

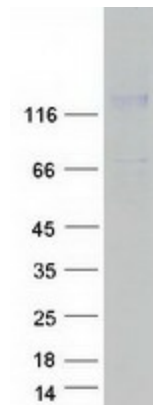
Tag:	C-Myc/DDK
Purity:	> 80% as determined by SDS-PAGE and Coomassie blue staining
Concentration:	>0.05 µg/µL as determined by microplate BCA method
Labeling Method:	Labeled with [U- ¹³ C ₆ , ¹⁵ N ₄]-L-Arginine and [U- ¹³ C ₆ , ¹⁵ N ₂]-L-Lysine
Buffer:	25 mM Tris-HCl, 100 mM glycine, pH 7.3
Storage:	Store at -80°C. Avoid repeated freeze-thaw cycles.



[View online »](#)

Stability:	Stable for 3 months from receipt of products under proper storage and handling conditions.
RefSeq:	NP_849191
RefSeq Size:	4306
RefSeq ORF:	378
Synonyms:	BSRPC
Locus ID:	124925
UniProt ID:	Q53EL9
Cytogenetics:	17q11.2
Summary:	The protein encoded by this gene is thought to contain five cysteine-rich motifs that are similar to sushi domains, as well as two domains similar to the amino terminal half of the CUB (for complement C1r/C1s, Uegf, Bmp1) domain. Mutations in this gene have been associated with febrile seizures. [provided by RefSeq, Jul 2016]
Protein Families:	Druggable Genome, Transmembrane

Product images:



Coomassie blue staining of purified SEZ6 protein (Cat# [TP312279]). The protein was produced from HEK293T cells transfected with SEZ6 cDNA clone (Cat# [RC212279]) using MegaTran 2.0 (Cat# [TT210002]).