

Product datasheet for PH312144

PPP2R4 (PTPA) (NM_021131) Human Mass Spec Standard

Product data:

Product Type:	Mass Spec Standards
Description:	PPP2R4 MS Standard C13 and N15-labeled recombinant protein (NP_066954)
Species:	Human
Expression Host:	HEK293
Expression cDNA Clone or AA Sequence:	RC212144
Predicted MW:	36.6 kDa
Protein Sequence:	>RC212144 representing NM_021131 Red=Cloning site Green=Tags(s)

MAEGERQPPDSSEEAPPATQNF IIPKKEIHTVPDMGKWKRSQAYADYIGFILTLNEGVKGKCLTFEYRV
SEAIEKLVALLNTLDRWIDETPPVDQPSRFGNKAYRTWYAKLDEEAENLVATVVPHTLAAAPEVAAYLK
ESVGNSTRIDYGTGHEAAFAFLCCLCKIGVLRVDDQIAIVFKVFNRYLEVMRKLQKTYRMEPAGSQGVW
GLDDFQFLPFIWGSSQLIDHPYLEPRHFVDEKAVNENHKDYMFLECILFITEMKTGPFAEHSNQLWNISA
VPSWSKVNQGLIRMYKAECLEKFPVIQHFKFGSLLPIHPVTSG

TRTRPLEQKLI SEEDLAANDILDYKDDDDKV

Tag:	C-Myc/DDK
Purity:	> 80% as determined by SDS-PAGE and Coomassie blue staining
Concentration:	>0.05 µg/µL as determined by microplate BCA method
Labeling Method:	Labeled with [U- ¹³ C ₆ , ¹⁵ N ₄]-L-Arginine and [U- ¹³ C ₆ , ¹⁵ N ₂]-L-Lysine
Buffer:	25 mM Tris-HCl, 100 mM glycine, pH 7.3
Storage:	Store at -80°C. Avoid repeated freeze-thaw cycles.
Stability:	Stable for 3 months from receipt of products under proper storage and handling conditions.
RefSeq:	NP_066954
RefSeq Size:	2666
RefSeq ORF:	969
Synonyms:	PP2A; PPP2R4; PR53
Locus ID:	5524



[View online »](#)

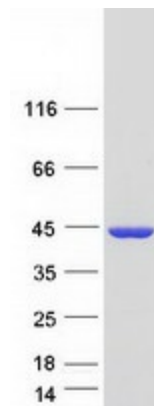
UniProt ID: [Q15257](#), [Q15257-2](#)

Cytogenetics: 9q34.11

Summary: Protein phosphatase 2A is one of the four major Ser/Thr phosphatases and is implicated in the negative control of cell growth and division. Protein phosphatase 2A holoenzymes are heterotrimeric proteins composed of a structural subunit A, a catalytic subunit C, and a regulatory subunit B. The regulatory subunit is encoded by a diverse set of genes that have been grouped into the B/PR55, B'/PR61, and B''/PR72 families. These different regulatory subunits confer distinct enzymatic specificities and intracellular localizations to the holoenzyme. The product of this gene belongs to the B' family. This gene encodes a specific phosphotyrosyl phosphatase activator of the dimeric form of protein phosphatase 2A. Alternative splicing results in multiple transcript variants encoding different isoforms. [provided by RefSeq, Jul 2008]

Protein Families: Druggable Genome, Phosphatase

Product images:



Coomassie blue staining of purified PTPA protein (Cat# [TP312144]). The protein was produced from HEK293T cells transfected with PTPA cDNA clone (Cat# [RC212144]) using MegaTran 2.0 (Cat# [TT210002]).