

## Product datasheet for PH312141

### SMUG1 (NM\_014311) Human Mass Spec Standard

#### Product data:

Product Type:	Mass Spec Standards
Description:	SMUG1 MS Standard C13 and N15-labeled recombinant protein (NP_055126)
Species:	Human
Expression Host:	HEK293
Expression cDNA Clone or AA Sequence:	RC212141
Predicted MW:	29.7 kDa
Protein Sequence:	>RC212141 representing NM_014311 Red=Cloning site Green=Tags(s)  MPQAFLLGSIHEPAGALMEPQPCGSLAESFLEEELRLNAELSQLQFSEPVGIIYNPVEYAWEPHRNYVT RYCQGPKEVLFLGMNPGPFGMAQTGVPFGEVSMVRDWLGIVGPVLTTPQEHPKRPVLGLECPQSEVSGAR FWGFFRNLCGQPEVFFHHCFVHNLCPLLFLAPSGRNLTPAELPAKQREQLLGICDAALCRQVQLLGVRLV VGVGRLAEQRRARALAGLMPEVQVEGLLHPSRNPQANKGWEAVAKERLNELGLLPLLLK  TRTRPLEQKLI SEEDLAANDILDYKDDDDKV
Tag:	C-Myc/DDK
Purity:	> 80% as determined by SDS-PAGE and Coomassie blue staining
Concentration:	>0.05 µg/µL as determined by microplate BCA method
Labeling Method:	Labeled with [U- <sup>13</sup> C <sub>6</sub> , <sup>15</sup> N <sub>4</sub> ]-L-Arginine and [U- <sup>13</sup> C <sub>6</sub> , <sup>15</sup> N <sub>2</sub> ]-L-Lysine
Buffer:	25 mM Tris-HCl, 100 mM glycine, pH 7.3
Storage:	Store at -80°C. Avoid repeated freeze-thaw cycles.
Stability:	Stable for 3 months from receipt of products under proper storage and handling conditions.
RefSeq:	<a href="#">NP_055126</a>
RefSeq Size:	1570
RefSeq ORF:	810
Synonyms:	FDG; HMUDG; UNG3
Locus ID:	23583
UniProt ID:	<a href="#">Q53HV7</a> , <a href="#">A0A024RAZ8</a>



[View online »](#)

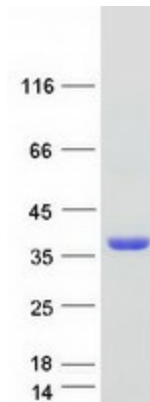
Cytogenetics: 12q13.13

**Summary:** This gene encodes a protein that participates in base excision repair by removing uracil from single- and double-stranded DNA. Many alternatively spliced transcript variants exist for this gene; the full-length nature is known for some but not all of the variants. [provided by RefSeq, Aug 2011]

**Protein Families:** Druggable Genome

**Protein Pathways:** Base excision repair

### Product images:



Coomassie blue staining of purified SMUG1 protein (Cat# [TP312141]). The protein was produced from HEK293T cells transfected with SMUG1 cDNA clone (Cat# [RC212141]) using MegaTran 2.0 (Cat# [TT210002]).