

## Product datasheet for PH312095

### EPB41 (NM\_203342) Human Mass Spec Standard

#### Product data:

Product Type:	Mass Spec Standards
Description:	EPB41 MS Standard C13 and N15-labeled recombinant protein (NP_976217)
Species:	Human
Expression Host:	HEK293
Expression cDNA Clone or AA Sequence:	RC212095
Predicted MW:	71.8 kDa
Protein Sequence:	>RC212095 representing NM_203342 Red=Cloning site Green=Tags(s)

MHCKVSLLD DTVYECVVEKHAKGQDLLKRVCEHLNLEEDYFGLAIWDNATSKTWLDSAKEIKKQVRGVP  
WNFTFNVKFYPPDPAQLTEDITRYLCLQLRQDIVAGRLPCSFATLALLGSYTIQSELGDYDPELHGVDY  
VSDFKLAPNQTKELKEEKVMEHKSYSRSMTPAQADLEFLENAKKLSMYGVDLHKAKDLEGVDIILGVCSSG  
LLVYKDKLRINRFPWPKVLKISYKRSSF I KIRPGEQEYESTIGFKLPSYRAAKLWKVCVEHHTFFRL  
TSTDTIPKSKFLALGSKFRYSGRTQAQTRQASALIDRPAPHFERTASKRASRLDGAAVDSADRSRPT  
SAPAITQGQVAEGGVLDSAKKT VVPAQKETVKA EVKKEDEPPEQAEPEPTAWKVEKTHIEVTVPTSN  
GDQTQKKRERLDGENIYIRHSNLMLEDL DKSQEEIKKHASI SELKKNFME SVPEPRPSEWDKRLSTHSP  
FRTLNINGQIPTGEGPPLVKTQVTI SDNANAVKSEIPTKDVPIVHTETKTITYEAAQTDDNSGDLDPGV  
LLTAQITITSETPSSTTTTQITKTVKGGISETRIEKRIVITGDADIDHDQVLVQAIKEAKEQHPDMSVTKV  
VHQETEIADE

TRTRPLEQKLISEEDLAANDILDYKDDDDKV

Tag:	C-Myc/DDK
Purity:	> 80% as determined by SDS-PAGE and Coomassie blue staining
Concentration:	>0.05 µg/µL as determined by microplate BCA method
Labeling Method:	Labeled with [U- 13C6, 15N4]-L-Arginine and [U- 13C6, 15N2]-L-Lysine
Buffer:	25 mM Tris-HCl, 100 mM glycine, pH 7.3
Storage:	Store at -80°C. Avoid repeated freeze-thaw cycles.
Stability:	Stable for 3 months from receipt of products under proper storage and handling conditions.
RefSeq:	<a href="#">NP_976217</a>
RefSeq Size:	6369



[View online »](#)

RefSeq ORF: 1923

Synonyms: 4.1R; EL1; HE

Locus ID: 2035

UniProt ID: [P11171](#), [Q59F12](#)

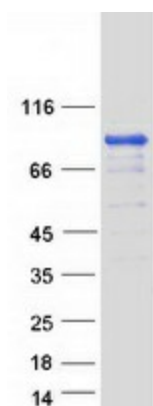
Cytogenetics: 1p35.3

**Summary:** The protein encoded by this gene, together with spectrin and actin, constitute the red cell membrane cytoskeletal network. This complex plays a critical role in erythrocyte shape and deformability. Mutations in this gene are associated with type 1 elliptocytosis (EL1). Alternatively spliced transcript variants encoding different isoforms have been described for this gene.[provided by RefSeq, Oct 2009]

**Protein Families:** Druggable Genome

**Protein Pathways:** Tight junction

### Product images:



Coomassie blue staining of purified EPB41 protein (Cat# [TP312095]). The protein was produced from HEK293T cells transfected with EPB41 cDNA clone (Cat# [RC212095]) using MegaTran 2.0 (Cat# [TT210002]).