

Product datasheet for PH312051

PAX2 (NM_003987) Human Mass Spec Standard

Product data:

Product Type:	Mass Spec Standards
Description:	PAX2 MS Standard C13 and N15-labeled recombinant protein (NP_003978)
Species:	Human
Expression Host:	HEK293
Expression cDNA Clone or AA Sequence:	RC212051
Predicted MW:	44.5 kDa
Protein Sequence:	>RC212051 representing NM_003987 Red=Cloning site Green=Tags(s) MDMHCKADPFSAMHPGHGGVNQLGGVFNVRPLPDVVRQRIVELAHQGVVPCDISRQLRVSHGCVSKILG RYYETGSIKPGVIGGSKPKVATPKVVDKIAEYKRNPTMFAWEIRDRLLAEGICDNDTVPSVSSINRIIR TKVQQPFHPTPDGAGTGVTAPGHTIVPSTASPPVSSASNDPVGSYSINGILGIPRSNGEKRRKREDEVYV DPAHIRGGGGLHLVWTLRDVSEGSVPNGDSQSGVDLSLRKHLRADTFTQQQLEALDRVFERPSYPDVFQAS EHIKSEQGNEYSLPALTPGLDEVKSSLASTNPELGSNVSGTQTYPVVTGRDMASSTLPGYPPHPPTGQ GSYPTSTLAGMVPGSEFSGNPYSHPOQTAYNEAWRFSNPALLSSPYYSAAAPRSAPAAAAAAYDRH TRTRPLEQKLISEEDLAANDILDYKDDDDKV
Tag:	C-Myc/DDK
Purity:	> 80% as determined by SDS-PAGE and Coomassie blue staining
Concentration:	>0.05 µg/µL as determined by microplate BCA method
Labeling Method:	Labeled with [U- ¹³ C ₆ , ¹⁵ N ₄]-L-Arginine and [U- ¹³ C ₆ , ¹⁵ N ₂]-L-Lysine
Buffer:	25 mM Tris-HCl, 100 mM glycine, pH 7.3
Storage:	Store at -80°C. Avoid repeated freeze-thaw cycles.
Stability:	Stable for 3 months from receipt of products under proper storage and handling conditions.
RefSeq:	NP_003978
RefSeq Size:	4276
RefSeq ORF:	1248
Synonyms:	FSGS7; PAPRS
Locus ID:	5076



[View online »](#)

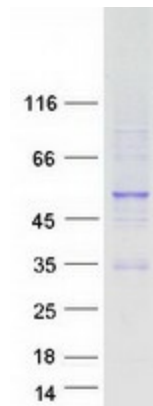
UniProt ID: [Q02962](#)

Cytogenetics: 10q24.31

Summary: PAX2 encodes paired box gene 2, one of many human homologues of the *Drosophila melanogaster* gene *prd*. The central feature of this transcription factor gene family is the conserved DNA-binding paired box domain. PAX2 is believed to be a target of transcriptional suppression by the tumor suppressor gene WT1. Mutations within PAX2 have been shown to result in optic nerve colobomas and renal hypoplasia. Alternative splicing of this gene results in multiple transcript variants. [provided by RefSeq, Dec 2014]

Protein Families: Druggable Genome

Product images:



Coomassie blue staining of purified PAX2 protein (Cat# [TP312051]). The protein was produced from HEK293T cells transfected with PAX2 cDNA clone (Cat# [RC212051]) using MegaTran 2.0 (Cat# [TT210002]).