

Product datasheet for PH312042

ARHGEF10L (NM_018125) Human Mass Spec Standard

Product data:

Product Type:	Mass Spec Standards
Description:	ARHGEF10L MS Standard C13 and N15-labeled recombinant protein (NP_060595)
Species:	Human
Expression Host:	HEK293
Expression cDNA Clone or AA Sequence:	RC212042
Predicted MW:	140.2 kDa
Protein Sequence:	>RC212042 representing NM_018125 Red=Cloning site Green=Tags(s)

MASSNPPQPAAIGDQLVPGVPGPSSEAEDDPGEAFEFDDSDDEEDTSAALGVPSLAPERDTPPLIHLDS
IPVTDPPDPAAPPDGTGVPWVSNDAADAASGARHSSWKRKSSRRIDRFTFPAL EEDVIYDDVPCESP
AHQPGAERNLLYEDAHRAGAPRQAEDLWSSSEFESYSEDSGEEAKPEVEVEPAKHRVVSFQPKLSPDLTR
LKERYARTKRDLALRVGGDMQELKHKYDCKMTQLMKAASGKDGLEKTRMAVMRKVSFLHRKDVLDG
SEEDMGLLEVSVDIKPPAPELGPMPPEGLSPQQVRRHILGSI VQSEGSYVESLKRIQLDYRNPLMEME
PKALSARKCQVFFRVKEILHCHSMFQIALSSRVAEWDSTEKIGDLFVASFSKSMVLDVYSDYVNNFTSA
MSIIKKACLKPAFLFLKRRQVCSPDRVTLYGLMVKPIQRFPQFILLQDMLKNTPRGHPDRLSLQLAL
TELETLAEKLEKRLADQVAEIQQLTKSVSDRSSLNKLTTSGQRQLLLETETVYVYDGRGQLIKSKER
RVFLLNDMLVCANINFKPANHRGQLEISSLVPLGPKYVVKWNTALPQVQVVEVGQDGGTYDKDNVLIQHS
GAKKASASGQAQNKVYLGPPRLFQELQDLQKDLAVVEQITLLISTLHGTYQNLNMTVAQDWCLALQRLMR
VKEEIIHSANKCRLRLLLPKPKDPSGRPI SFMVVFITPNPLSKISWVNRHLAKIGLREENQPGWLCPEDE
DKKSKAPFWCPI LACCIPAFSSRALSLQLGALVHSPVNCPLLGFSAVSTSLPQGYLWVGGGQEGAGGQVE
IFSLNRPSPRTVKSFLAAPVLCMEYIPELEEEAE SRDESPTVADPSATVHPTICLGLQDGSILLYSSVD
TGTQCLVSCRSPGLQPVLCLRHSPFHLLAGLQDGTAAAYPRTSGGVLWDL E SPPVCLTVGPGVPVRTLLSL
EDAVWASCGPRVTVLEATTLQPQSF EAHQDEAVSVTHMVKAGSGVWMAFSSGTSIRLFHTETLEHLQEI
NIATRTTFLLPQKHL CVTSL LICQGLLWVGTQGVIVLLPVPRLEGIPKITGKGMVSLNGHCGPVAFLA
VATSILAPDILRSDQEEAEGPRAEEDKPDGQAHEPMPD SHVGRELTRKKGILLQYRLRSTAHLPGPLLSM
REPAPADGAALHSEEDGSIYEMADDPDIWVRSRPCARDHRKEICSVAIISGGQYRNFSGALGSSGRQ
APCGETDSTLLIWQVPLML

TRTRPLEQKLI SEEDLAANDILDYKDDDDKV

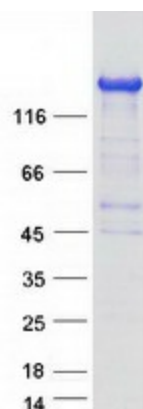
Tag:	C-Myc/DDK
Purity:	> 80% as determined by SDS-PAGE and Coomassie blue staining
Concentration:	>0.05 µg/µL as determined by microplate BCA method



[View online »](#)

Labeling Method:	Labeled with [U- ¹³ C ₆ , ¹⁵ N ₄]-L-Arginine and [U- ¹³ C ₆ , ¹⁵ N ₂]-L-Lysine
Buffer:	25 mM Tris-HCl, 100 mM glycine, pH 7.3
Storage:	Store at -80°C. Avoid repeated freeze-thaw cycles.
Stability:	Stable for 3 months from receipt of products under proper storage and handling conditions.
RefSeq:	NP_060595
RefSeq Size:	4502
RefSeq ORF:	3837
Synonyms:	GrinchGEF
Locus ID:	55160
UniProt ID:	Q9HCE6
Cytogenetics:	1p36.13
Summary:	This gene belongs to the RhoGEF subfamily of RhoGTPases. Members of this subfamily are activated by specific guanine nucleotide exchange factors (GEFs) and are involved in signal transduction. The encoded protein shows cytosolic distribution. Alternative splicing results in multiple transcript variants. [provided by RefSeq, Jun 2016]

Product images:



Coomassie blue staining of purified ARHGEF10L protein (Cat# [TP312042]). The protein was produced from HEK293T cells transfected with ARHGEF10L cDNA clone (Cat# [RC212042]) using MegaTran 2.0 (Cat# [TT210002]).