

Product datasheet for PH312036

EDF1 (NM_153200) Human Mass Spec Standard

Product data:

Product Type:	Mass Spec Standards
Description:	EDF1 MS Standard C13 and N15-labeled recombinant protein (NP_694880)
Species:	Human
Expression Host:	HEK293
Expression cDNA Clone or AA Sequence:	RC212036
Predicted MW:	15.3 kDa
Protein Sequence:	>RC212036 representing NM_153200 Red=Cloning site Green=Tags(s) MAESDWDVTVTLRKKGPTAAQAKSKQAILAAQRRGEDVETSKKWAAGQNKQHSITKNTAKLDRETEELHH DRVLTLEVGVKVIQQGRQSKGLTQKDLATKINEKPQVIADYESGRAIPNNQVLGKIERAIGCEPSTLRRVR TRTRPLEQKLISEEDLAANDILDYKDDDDKV
Tag:	C-Myc/DDK
Purity:	> 80% as determined by SDS-PAGE and Coomassie blue staining
Concentration:	>0.05 µg/µL as determined by microplate BCA method
Labeling Method:	Labeled with [U- 13C6, 15N4]-L-Arginine and [U- 13C6, 15N2]-L-Lysine
Buffer:	25 mM Tris-HCl, 100 mM glycine, pH 7.3
Storage:	Store at -80°C. Avoid repeated freeze-thaw cycles.
Stability:	Stable for 3 months from receipt of products under proper storage and handling conditions.
RefSeq:	NP_694880
RefSeq Size:	538
RefSeq ORF:	417
Synonyms:	CFAP280; EDF-1; MBF1
Locus ID:	8721
UniProt ID:	O60869
Cytogenetics:	9q34.3



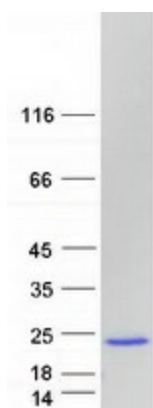
[View online »](#)

Summary:

This gene encodes a protein that may regulate endothelial cell differentiation, lipid metabolism, and hormone-induced cardiomyocyte hypertrophy. The encoded protein has also been found to act as a transcriptional coactivator by interconnecting the general transcription factor TATA element-binding protein (TBP) and gene-specific activators. Alternate splicing results in multiple transcript variants. [provided by RefSeq, Jul 2013]

Protein Families:

Druggable Genome, Transcription Factors

Product images:

Coomassie blue staining of purified EDF1 protein (Cat# [TP312036]). The protein was produced from HEK293T cells transfected with EDF1 cDNA clone (Cat# [RC212036]) using MegaTran 2.0 (Cat# [TT210002]).