

## Product datasheet for PH312031

### ISCU (NM\_014301) Human Mass Spec Standard

#### Product data:

Product Type:	Mass Spec Standards
Description:	ISCU MS Standard C13 and N15-labeled recombinant protein (NP_055116)
Species:	Human
Expression Host:	HEK293
Expression cDNA Clone or AA Sequence:	RC212031
Predicted MW:	15.1 kDa
Protein Sequence:	>RC212031 representing NM_014301 Red=Cloning site Green=Tags(s)  MVLIDMSVDLSTQVVDHYENPRNVGSLDKTSKNVGTGLVGAPACGDVMKLIQVDEKGIIVDARFKTFGC GSAIASSSLATEWVKGKTVEEALTIKNTDIAKELCLPPVKLHCSMLAEDA IKAALADYKLGKQEPKKGAE KK  TRTRPLEQKLI SEEDLAANDILDYKDDDDKV
Tag:	C-Myc/DDK
Purity:	> 80% as determined by SDS-PAGE and Coomassie blue staining
Concentration:	>0.05 µg/µL as determined by microplate BCA method
Labeling Method:	Labeled with [U- 13C6, 15N4]-L-Arginine and [U- 13C6, 15N2]-L-Lysine
Buffer:	25 mM Tris-HCl, 100 mM glycine, pH 7.3
Storage:	Store at -80°C. Avoid repeated freeze-thaw cycles.
Stability:	Stable for 3 months from receipt of products under proper storage and handling conditions.
RefSeq:	<u><a href="#">NP_055116</a></u>
RefSeq Size:	1086
RefSeq ORF:	426
Synonyms:	2310020H20Rik; HML; hnifU; ISU2; NIFU; NIFUN
Locus ID:	23479
UniProt ID:	<u><a href="#">Q9H1K1</a></u> , <u><a href="#">A0A024RBI3</a></u> , <u><a href="#">B3KQ30</a></u>

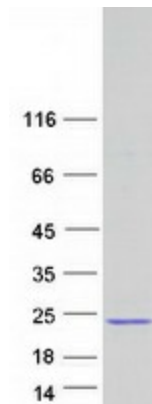


[View online »](#)

**Cytogenetics:** 12q23.3

**Summary:** This gene encodes a component of the iron-sulfur (Fe-S) cluster scaffold. Fe-S clusters are cofactors that play a role in the function of a diverse set of enzymes, including those that regulate metabolism, iron homeostasis, and oxidative stress response. Alternative splicing results in transcript variants encoding different protein isoforms that localize either to the cytosol or to the mitochondrion. Mutations in this gene have been found in patients with hereditary myopathy with lactic acidosis. A disease-associated mutation in an intron may activate a cryptic splice site, resulting in the production of a splice variant encoding a putatively non-functional protein. A pseudogene of this gene is present on chromosome 1. [provided by RefSeq, Feb 2016]

### Product images:



Coomassie blue staining of purified ISCU protein (Cat# [TP312031]). The protein was produced from HEK293T cells transfected with ISCU cDNA clone (Cat# [RC212031]) using MegaTran 2.0 (Cat# [TT210002]).