

## Product datasheet for PH312029

### AMELY (NM\_001143) Human Mass Spec Standard

#### Product data:

|                                       |  |
|---------------------------------------|--|
| Product Type:                         | Mass Spec Standards  |
| Description:                          | AMELY MS Standard C13 and N15-labeled recombinant protein (NP_001134)  |
| Species:                              | Human  |
| Expression Host:                      | HEK293   |
| Expression cDNA Clone or AA Sequence: | RC212029   |
| Predicted MW:                         | 21.73 kDa  |
| Protein Sequence:                     | >RC212029 representing NM_001143<br>Red=Cloning site Green=Tags(s)<br><br>MGTWILFACLVGAAFAMPLPPHGPYINFSYEVLTPLKQYQSMIRPPYSSYGYEPMGGWLHHQIIPVV<br>SQQHPLTHTLQSHHHIPVVAQQPRVRQQALMPVPGQQSMTPTQHHQPNLPLPAQQPFQPQPQPHQP<br>MQPQQPVQPMQPLLQPPLPPMFPLRPLPILPDLHLEAWPATDKTKQEEVD<br><br>TRTRPLEQKLISEEDLAANDILDYKDDDDKV |
| Tag:                                  | C-Myc/DDK  |
| Purity:                               | > 80% as determined by SDS-PAGE and Coomassie blue staining  |
| Concentration:                        | >0.05 µg/µL as determined by microplate BCA method   |
| Labeling Method:                      | Labeled with [U- <sup>13</sup> C <sub>6</sub> , <sup>15</sup> N <sub>4</sub> ]-L-Arginine and [U- <sup>13</sup> C <sub>6</sub> , <sup>15</sup> N <sub>2</sub> ]-L-Lysine   |
| Buffer:                               | 25 mM Tris-HCl, 100 mM glycine, pH 7.3   |
| Storage:                              | Store at -80°C. Avoid repeated freeze-thaw cycles.   |
| Stability:                            | Stable for 3 months from receipt of products under proper storage and handling conditions.   |
| RefSeq:                               | <a href="#">NP_001134</a>  |
| RefSeq Size:                          | 802  |
| RefSeq ORF:                           | 576  |
| Synonyms:                             | AMGL; AMGY   |
| Locus ID:                             | 266  |
| UniProt ID:                           | <a href="#">Q99218</a>   |



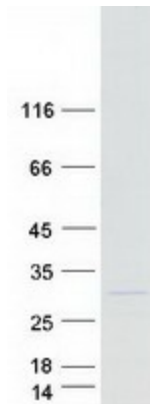
[View online »](#)

**Cytogenetics:** Yp11.2

**Summary:** This gene encodes a member of the amelogenin family of extracellular matrix proteins. Amelogenins are involved in biomineralization during tooth enamel development. Mutations in a related gene on chromosome X cause X-linked amelogenesis imperfecta. [provided by RefSeq, Jul 2008]

**Protein Families:** Secreted Protein

**Product images:**



Coomassie blue staining of purified AMELY protein (Cat# [TP312029]). The protein was produced from HEK293T cells transfected with AMELY cDNA clone (Cat# [RC212029]) using MegaTran 2.0 (Cat# [TT210002]).