

Product datasheet for PH312024

MTMR1 (NM_003828) Human Mass Spec Standard

Product data:

Product Type:	Mass Spec Standards
Description:	MTMR1 MS Standard C13 and N15-labeled recombinant protein (NP_003819)
Species:	Human
Expression Host:	HEK293
Expression cDNA Clone or AA Sequence:	RC212024
Predicted MW:	74.5 kDa
Protein Sequence:	>RC212024 representing NM_003828 Red=Cloning site Green=Tags(s)

MDRPAAAAAGCEGGGPNPAGRRPPRAAGGATAGSRQPSVETLDSPTGSHVEWCKQLIAATISSQI
SGSVTSENVSRDYKALRDGNKLAQMEEAPLFPGESIKAIKDVMIYICPFMGAVSGTLTVTDFKLYFKNVE
RDPHFILDVPLGVISRVEKIGAQSHGDNCSGIEIVCKDMRNLRLAYKQEEQSKLGIFENLNKHAFPLSNG
QALFAFSYKEKFPINGWKVYDPVSEYKRQGLPNESWKISKINSNYEFCDTYPAIIVVPTSVKDDDLKVA
AFRAKGRVPVLSWIHPESQATITRCSQPLVGPNDKRCKEDELQYQTIMDANAQSHKLIIFDARQNSVADT
NKTKGGGYESESAYPNAELVFLEIHNIHVMRESLRKLEIVYPSIDEARWLSNVDGTHWLEYIRMLLAGA
VRIADKIESGKTSVVVHCSGDGWRDRTAQLTSLAMLMLDSYRTIKGFETLVEKEWISFGHRFALRVGHGND
NHADADRSPIFLQFVDCVWQMTQFSAFEFNELFLITILDHLYSCLFGTFLCNCEQQRFKEDVYTKTIS
LWSYINSQLDEFNPFVNYENHVLYPVASLSHLELWVNYVVRWNPMPMPQHQLKELLAVRAELQK
RVEGLQREVATRAVSSSSERGSPPSHSATS SVHTSV

TRTRPLEQKLI SEEDLAANDILDYKDDDDKV

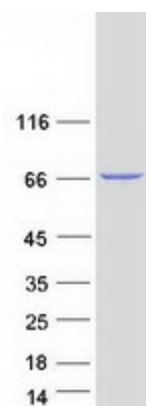
Tag:	C-Myc/DDK
Purity:	> 80% as determined by SDS-PAGE and Coomassie blue staining
Concentration:	>0.05 µg/µL as determined by microplate BCA method
Labeling Method:	Labeled with [U- 13C6, 15N4]-L-Arginine and [U- 13C6, 15N2]-L-Lysine
Buffer:	25 mM Tris-HCl, 100 mM glycine, pH 7.3
Storage:	Store at -80°C. Avoid repeated freeze-thaw cycles.
Stability:	Stable for 3 months from receipt of products under proper storage and handling conditions.
RefSeq:	NP_003819
RefSeq Size:	2754



[View online »](#)

RefSeq ORF:	1995
Locus ID:	8776
UniProt ID:	Q13613 , Q8NEC6
Cytogenetics:	Xq28
Summary:	This gene encodes a member of the myotubularin related family of proteins. Members of this family contain the consensus sequence for the active site of protein tyrosine phosphatases. Alternatively spliced variants have been described but their biological validity has not been determined. [provided by RefSeq, Jul 2008]
Protein Families:	Druggable Genome, Phosphatase
Protein Pathways:	Fructose and mannose metabolism, Metabolic pathways, Riboflavin metabolism, Thiamine metabolism

Product images:



Coomassie blue staining of purified MTMR1 protein (Cat# [TP312024]). The protein was produced from HEK293T cells transfected with MTMR1 cDNA clone (Cat# [RC212024]) using MegaTran 2.0 (Cat# [TT210002]).