

Product datasheet for PH312021

XYLB (NM_005108) Human Mass Spec Standard

Product data:

Product Type:	Mass Spec Standards
Description:	XYLB MS Standard C13 and N15-labeled recombinant protein (NP_005099)
Species:	Human
Expression Host:	HEK293
Expression cDNA Clone or AA Sequence:	RC212021
Predicted MW:	58.2 kDa
Protein Sequence:	>RC212021 representing NM_005108 Red=Cloning site Green=Tags(s)

MAEHAPRRCCLGWDFSTQQVKVVAVDAELNVFYEESVHFDRDLPEFGTQGGVHVHKDGLTVTSPVLMWVQ
ALDIILEKMKASGFDFSQVLALSGAGQQHGSIIYWKAGAQQALTSPLDLRLHQQLQDCFISIDCPVWMS
STTAQCRQLEAAVGAQALSCLTGSRAYERFTGNQIAKIYQONPEAYSHTERISLVSSFAASLFLGSYSP
IDYSDGSGMNLQIQDKVWSQAQLGACAPHLEEKLSPPVPSCSVGAISSYVVQRYGFPFGCKVVAFTGD
NPASLAGMRLLEEGDIAVSLGSDTLFLWLQEPMPALEGHIFCNPVDSQHYMALLCFKNGSLMREKIRNES
VSRWSDFSKALQSTEMGNGNLGFYFDVMEITPEIIGRHRFNTENHKVAAFPGDVEVRALIEGQFMAKR
IHAEGLGYRVMSKTKILATGGASHNREILQVLADVFDAPVYVIDTANSACVGSAYRAFHGLAGGTDVPFS
EYVKLAPNPRLAATPSGASQVYEALLPQYAKLEQRILSQTRGPPE

TRTRPLEQKLISEEDLAANDILDYKDDDDKV

Tag:	C-Myc/DDK
Purity:	> 80% as determined by SDS-PAGE and Coomassie blue staining
Concentration:	>0.05 µg/µL as determined by microplate BCA method
Labeling Method:	Labeled with [U- ¹³ C ₆ , ¹⁵ N ₄]-L-Arginine and [U- ¹³ C ₆ , ¹⁵ N ₂]-L-Lysine
Buffer:	25 mM Tris-HCl, 100 mM glycine, pH 7.3
Storage:	Store at -80°C. Avoid repeated freeze-thaw cycles.
Stability:	Stable for 3 months from receipt of products under proper storage and handling conditions.
RefSeq:	<u>NP_005099</u>
RefSeq Size:	3694
RefSeq ORF:	1608



[View online »](#)

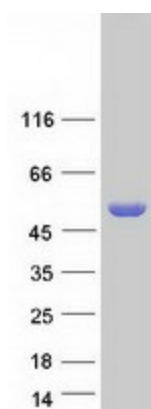
Locus ID: 9942
UniProt ID: [O75191](#)
Cytogenetics: 3p22.2

Summary: The protein encoded by this gene shares 22% sequence identity with Hemophilus influenzae xylulokinase, and even higher identity to other gene products in C.elegans (45%) and yeast (31-35%), which are thought to belong to a family of enzymes that include fucokinase, gluconokinase, glycerokinase and xylulokinase. These proteins play important roles in energy metabolism. [provided by RefSeq, Aug 2009]

Protein Families: Druggable Genome

Protein Pathways: Metabolic pathways, Pentose and glucuronate interconversions

Product images:



Coomassie blue staining of purified XYLB protein (Cat# [TP312021]). The protein was produced from HEK293T cells transfected with XYLB cDNA clone (Cat# [RC212021]) using MegaTran 2.0 (Cat# [TT210002]).