

## Product datasheet for PH312019

### WIPF1 (NM\_001077269) Human Mass Spec Standard

#### Product data:

Product Type:	Mass Spec Standards
Description:	WIPF1 MS Standard C13 and N15-labeled recombinant protein (NP_001070737)
Species:	Human
Expression Host:	HEK293
Expression cDNA Clone or AA Sequence:	RC212019
Predicted MW:	51.1 kDa
Protein Sequence:	>RC212019 representing NM_001077269 Red=Cloning site Green=Tags(s)

MPVPPPPAPPPPTFALANTEKPTLNKTEQAGRNALLSDISKGKKLKKTVTNDRSAPILDKPKGAGAGGG  
GGGFGGGGFGGGGGGGGGSGGGGPPGLGGLFQAGMPKLRSTANRDNDSSGSRPPLLPPGGRSTSAKP  
FSPPSGRFRFPVSPGHRSGPPEPQRNRMPRPDPVGSKPDSIPPPVPSTPRPIQSSLHNRGSPVPVGGP  
RQPSPGTPPPFPNGRGTALGGGSIQSPLSSSSPFSNRPPLPPTPSRALDDKPPPPPPVGNRPSIHRE  
AVPPPPQNNKPPVPSTPRPSASSQAPPPPPSRGPPPLPPSSSGNDETPRLPQRNLSLSSSTPPLPS  
PGRSGPLPPPSERPPPPVRDPPGRSGPLPPPPVSRNGSTSRLPATPQLPSRSGVDSRSGRPPPLPP  
DRPSAGAPPPPPSTSIIRNGFQDSPCEDEWESRFYFHPISDLPPPEPVYQTTKSYP SKLARNESRSGSNR  
RERGAPPLPIPR

TRTRPLEQKLI SEEDLAANDILDYKDDDDKV

Tag:	C-Myc/DDK
Purity:	> 80% as determined by SDS-PAGE and Coomassie blue staining
Concentration:	>0.05 µg/µL as determined by microplate BCA method
Labeling Method:	Labeled with [U- 13C6, 15N4]-L-Arginine and [U- 13C6, 15N2]-L-Lysine
Buffer:	25 mM Tris-HCl, 100 mM glycine, pH 7.3
Storage:	Store at -80°C. Avoid repeated freeze-thaw cycles.
Stability:	Stable for 3 months from receipt of products under proper storage and handling conditions.
RefSeq:	<u>NP_001070737</u>
RefSeq Size:	4664
RefSeq ORF:	1509

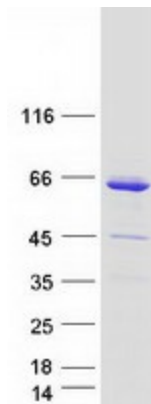


[View online »](#)

**Synonyms:** PRPL-2; WAS2; WASPIP; WIP  
**Locus ID:** 7456  
**UniProt ID:** [O43516](#), [A0A140VJZ9](#), [Q2YDC4](#)  
**Cytogenetics:** 2q31.1

**Summary:** This gene encodes a protein that plays an important role in the organization of the actin cytoskeleton. The encoded protein binds to a region of Wiskott-Aldrich syndrome protein that is frequently mutated in Wiskott-Aldrich syndrome, an X-linked recessive disorder. Impairment of the interaction between these two proteins may contribute to the disease. Two transcript variants encoding the same protein have been identified for this gene. [provided by RefSeq, Jul 2008]

### Product images:



Coomassie blue staining of purified WIPF1 protein (Cat# [TP312019]). The protein was produced from HEK293T cells transfected with WIPF1 cDNA clone (Cat# [RC212019]) using MegaTran 2.0 (Cat# [TT210002]).