

## Product datasheet for PH312015

### DISC1 (NM\_018662) Human Mass Spec Standard

#### Product data:

Product Type:	Mass Spec Standards
Description:	DISC1 MS Standard C13 and N15-labeled recombinant protein (NP_061132)
Species:	Human
Expression Host:	HEK293
Expression cDNA Clone or AA Sequence:	RC212015
Predicted MW:	93.4 kDa
Protein Sequence:	>RC212015 representing NM_018662 Red=Cloning site Green=Tags(s)

MPGGGPQGAPAAAGGGGVSHRAGSRDCLPPAACFRRRRLARRPGYMRSSTGPGIGFLSPAVGTLFRFPGG  
VSGEESHSESRARQCGLDSRGLLVRSVPVSKSAAAPTVTSVRGTSAHFGIQLRGGTRLPDRLSWPCGPGS  
AGWQQEF AAMDSSSETLDASWEAACSDGARRVRAAGSLPSAELSSNSCSPGCGPEVPPTPPGSHSAFTSS  
SFIRLSLGSAGERGEAEGCPPSREAESHCSQPQEMGAKAASLDGPHEDPRCLSRPFSLLATRVSADLAQA  
ARNSSRPERDMHSLPMDPGSSSLDPSLAGCGGDGSSGSDAHSWDTLLRKWEPVLRDCLLRNRQMEV  
ISLRKLKQLQEDAVENDDYDKAETLQQRLEDLEQEKISLHFQLPSRQPALSSFLGHAAQVQAALRRGA  
TQQASGDDTHTPLRMEPRLLEPTAQDSLHVSITRRDWLLQEKQQLQKEIEALQARMFVLEAKDQQLRREI  
EEQEQQQLQWGGCDLTPLVGQLSLGQLQEVSKALQDTLASAGQIPFHAEPPEITIRSLQERIKSLNLSLKEI  
TTKVC MSEKFCSTLRKKVNDIETQLPALLEAKMHAISGNHFWTAKDLTEEIRSLT SEREGLEGLLSKLLV  
LSSRNVKKLGSVKEDYNRLRREVEHQETAYETSVKENTMKYMETLKNKLCCKCPDLLGKWEADLEACRL  
LIQSLQLQEQARGSLSVEDERQMDLEGAAPPIPPRLHSEDKRKTPLKVLEEWKTHLIPSLHCAGGEQKEE  
SYILSAELGEKCEDIGKLLYLEDQLHTAIHSHDEDLIQSLRRELQMVKETLQAMILQLQPAKEAGEREA  
AASCMTAGVHEAQA

TRTRPLEQKLISEEDLAANDILDYKDDDDKV

Tag:	C-Myc/DDK
Purity:	> 80% as determined by SDS-PAGE and Coomassie blue staining
Concentration:	>0.05 µg/µL as determined by microplate BCA method
Labeling Method:	Labeled with [U- <sup>13</sup> C <sub>6</sub> , <sup>15</sup> N <sub>4</sub> ]-L-Arginine and [U- <sup>13</sup> C <sub>6</sub> , <sup>15</sup> N <sub>2</sub> ]-L-Lysine
Buffer:	25 mM Tris-HCl, 100 mM glycine, pH 7.3
Storage:	Store at -80°C. Avoid repeated freeze-thaw cycles.
Stability:	Stable for 3 months from receipt of products under proper storage and handling conditions.



[View online »](#)

RefSeq: [NP\\_061132](#)

RefSeq Size: 7069

RefSeq ORF: 2562

Synonyms: C1orf136; SCZD9

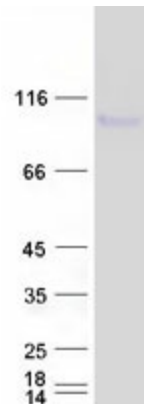
Locus ID: 27185

UniProt ID: [Q9NRI5](#)

Cytogenetics: 1q42.2

**Summary:** This gene encodes a protein with multiple coiled coil motifs which is located in the nucleus, cytoplasm and mitochondria. The protein is involved in neurite outgrowth and cortical development through its interaction with other proteins. This gene is disrupted in a t(1;11) (q42.1;q14.3) translocation which segregates with schizophrenia and related psychiatric disorders in a large Scottish family. Alternate transcriptional splice variants, encoding different isoforms, have been characterized. [provided by RefSeq, Jul 2008]

### Product images:



Coomassie blue staining of purified DISC1 protein (Cat# [TP312015]). The protein was produced from HEK293T cells transfected with DISC1 cDNA clone (Cat# [RC212015]) using MegaTran 2.0 (Cat# [TT210002]).