

## Product datasheet for PH311995

### PRAS40 (AKT1S1) (NM\_001098632) Human Mass Spec Standard

#### Product data:

Product Type:	Mass Spec Standards
Description:	AKT1S1 MS Standard C13 and N15-labeled recombinant protein (NP_001092102)
Species:	Human
Expression Host:	HEK293
Expression cDNA Clone or AA Sequence:	RC211995
Predicted MW:	27.2 kDa
Protein Sequence:	>RC211995 representing NM_001098632 Red=Cloning site Green=Tags(s)  MASGRPEELWEAVVGAERFRARTGTELVLLTAAPPPPRPGPCAYAAHGRGALAEAARRCLHDIALAHR AATAARPPAPPAPQPPSPTSPPRPTLAREDNEEDEPTETETSGEQLGSDNGGLFVMDATLQDL PPFCESDPESTDDGSLSEETPAGPPTCSVPPASALPTQQYAKSLPVSVVWGFKEKRTEARSSDEENGPP SSPDLRIAASMRALVLEAEDTQVFGDLPRRLNTSDFQKLKRRKY  TRTRPLEQKLISEEDLAANDILDYKDDDDKV
Tag:	C-Myc/DDK
Purity:	> 80% as determined by SDS-PAGE and Coomassie blue staining
Concentration:	>0.05 µg/µL as determined by microplate BCA method
Labeling Method:	Labeled with [U- <sup>13</sup> C <sub>6</sub> , <sup>15</sup> N <sub>4</sub> ]-L-Arginine and [U- <sup>13</sup> C <sub>6</sub> , <sup>15</sup> N <sub>2</sub> ]-L-Lysine
Buffer:	25 mM Tris-HCl, 100 mM glycine, pH 7.3
Storage:	Store at -80°C. Avoid repeated freeze-thaw cycles.
Stability:	Stable for 3 months from receipt of products under proper storage and handling conditions.
RefSeq:	<a href="#">NP_001092102</a>
RefSeq Size:	2033
RefSeq ORF:	768
Synonyms:	Lobe; PRAS40
Locus ID:	84335
UniProt ID:	<a href="#">Q96B36</a> , <a href="#">A0A024QZF6</a>

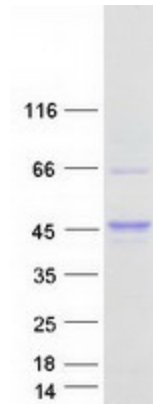


[View online »](#)

Cytogenetics: 19q13.33

Summary: AKT1S1 is a proline-rich substrate of AKT (MIM 164730) that binds 14-3-3 protein (see YWHAH, MIM 113508) when phosphorylated (Kovacina et al., 2003 [PubMed 12524439]).[supplied by OMIM, Mar 2008]

### Product images:



Coomassie blue staining of purified AKT1S1 protein (Cat# [TP311995]). The protein was produced from HEK293T cells transfected with AKT1S1 cDNA clone (Cat# [RC211995]) using MegaTran 2.0 (Cat# [TT210002]).