

Product datasheet for PH311980

ABR (NM_021962) Human Mass Spec Standard

Product data:

Product Type:	Mass Spec Standards
Description:	ABR MS Standard C13 and N15-labeled recombinant protein (NP_068781)
Species:	Human
Expression Host:	HEK293
Expression cDNA Clone or AA Sequence:	RC211980
Predicted MW:	97.4 kDa
Protein Sequence:	>RC211980 representing NM_021962 Red=Cloning site Green=Tags(s)

MEPLSHRGLPRLSWIDTLYSNFSYGTDEYDGEENEEQKGPPEGSETMPYIDESPTMSPQLSARSQGGGDG
VSPTPPEGLAPGVEAGKGLEMRKLVLSGFLASEEIIYINQLEALLLPMKPLKATATTSQPVLTIQQIETIF
YKIQDIYEIHKFEYDNLCPKVVQWDSQVTMGHLFQKLASQLGVYKAFVDNYKVALETAEKCSQSNNQFQK
ISEELKVKGPKDSKDSHTSVTMEALLYKPIDRVTRSTLVLDLLKHTPVDHPDYPLLQDALRISQNFSS
INEDIDPRRTAVTTPKGETRQLVKDGFLEVESESSRKL RHVFLFTDVLLCAKLLKTSAGKHQQYDCKWYI
PLADLVFPSPPEEASESPQVHPFPDHELEDMKMKISALKSEIQKEKANKGQSRAIERLKKKMFENEFLLLL
NSPTIPFRIHNRNGKSYLFLSSDYERSEWREAIQKLQKKDLQAFVLSVELQVLTGSCFKLRTVHNIPV
TSNKDDDESPGLYGFLHVIHSAKGFQSANLYCTLEVDSFGYFVSKAKTRVFRDTAEPKWDEEFEEIELE
GSQSLRILCYEKCYDKTKVNKDNEIVDKIMGKQIQLDPQTVETKNWHTDVIEMNGIKVEFSMKFTRSD
MSLKRTPSKKQTVGFGVKISVVTKRERSKVPYIVRQCVEEVEKRGIEEVGIYRISGVATDIQALKAVFDA
NNKDILLMLSDMDINAIAGTLKLYFRELPELLTDRLYPAFMEGIALSDPAAKENCMHLLRSLPDPNLI
TFLFLLLEHLKRVAEKEPINKMSLHNLATVFGPTLLRPSEVESKAHLTSAADIWSDHVMQVQVLLYYLQH
PPI SF AELKRNTLYFSTDV

TRTRPLEQKLI SEEDLAANDILDYKDDDDKV

Tag:	C-Myc/DDK
Purity:	> 80% as determined by SDS-PAGE and Coomassie blue staining
Concentration:	>0.05 µg/µL as determined by microplate BCA method
Labeling Method:	Labeled with [U- ¹³ C ₆ , ¹⁵ N ₄]-L-Arginine and [U- ¹³ C ₆ , ¹⁵ N ₂]-L-Lysine
Buffer:	25 mM Tris-HCl, 100 mM glycine, pH 7.3
Storage:	Store at -80°C. Avoid repeated freeze-thaw cycles.
Stability:	Stable for 3 months from receipt of products under proper storage and handling conditions.



[View online »](#)

RefSeq: [NP_068781](#)

RefSeq Size: 5300

RefSeq ORF: 2577

Synonyms: MDB

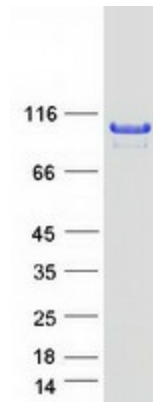
Locus ID: 29

UniProt ID: [Q12979](#), [Q6ZT60](#), [B7Z7Z1](#)

Cytogenetics: 17p13.3

Summary: This gene encodes a protein that is similar to the protein encoded by the breakpoint cluster region gene located on chromosome 22. The protein encoded by this gene contains a GTPase-activating protein domain, a domain found in members of the Rho family of GTP-binding proteins. Functional studies in mice determined that this protein plays a role in vestibular morphogenesis. Alternatively spliced transcript variants have been reported for this gene. [provided by RefSeq, Feb 2012]

Product images:



Coomassie blue staining of purified ABR protein (Cat# [TP311980]). The protein was produced from HEK293T cells transfected with ABR cDNA clone (Cat# [RC211980]) using MegaTran 2.0 (Cat# [TT210002]).