

## Product datasheet for PH311968

### SIT (SIT1) (NM\_014450) Human Mass Spec Standard

#### Product data:

Product Type:	Mass Spec Standards
Description:	SIT1 MS Standard C13 and N15-labeled recombinant protein (NP_055265)
Species:	Human
Expression Host:	HEK293
Expression cDNA Clone or AA Sequence:	RC211968
Predicted MW:	21.1 kDa
Protein Sequence:	>RC211968 protein sequence Red=Cloning site Green=Tags(s)  MNQADPRLRAVCLWLTSAAMSRGDNCTDLLALGIPSITQAWGLWLLGAVTLLFLISLAAHL SQWTRGR SRSHPGQGRSGESVVEVPLYGNLHYLQTGRLSQDPEPDQDPTLGGPARAAEEVMCYTSLQLRPPQGRIP GPGTPVKYSEVLDSEPKSQASGPEPELYASVCAQTRRARASFPDQAYANSQPAAS  TRTRPLEQKLISEEDLAANDILDYKDDDDKV
Tag:	C-Myc/DDK
Purity:	> 80% as determined by SDS-PAGE and Coomassie blue staining
Concentration:	>0.05 µg/µL as determined by microplate BCA method
Labeling Method:	Labeled with [U- <sup>13</sup> C <sub>6</sub> , <sup>15</sup> N <sub>4</sub> ]-L-Arginine and [U- <sup>13</sup> C <sub>6</sub> , <sup>15</sup> N <sub>2</sub> ]-L-Lysine
Buffer:	25 mM Tris-HCl, 100 mM glycine, pH 7.3
Storage:	Store at -80°C. Avoid repeated freeze-thaw cycles.
Stability:	Stable for 3 months from receipt of products under proper storage and handling conditions.
RefSeq:	<a href="#">NP_055265</a>
RefSeq Size:	1238
RefSeq ORF:	588
Synonyms:	SIT; SIT-R
Locus ID:	27240
UniProt ID:	<a href="#">Q9Y3P8</a>



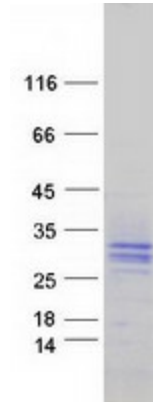
[View online »](#)

Cytogenetics: 9p13.3

Summary: Negatively regulates TCR (T-cell antigen receptor)-mediated signaling in T-cells. Involved in positive selection of T-cells.[UniProtKB/Swiss-Prot Function]

Protein Families: Transmembrane

### Product images:



Coomassie blue staining of purified SIT1 protein (Cat# [TP311968]). The protein was produced from HEK293T cells transfected with SIT1 cDNA clone (Cat# [RC211968]) using MegaTran 2.0 (Cat# [TT210002]).