

Product datasheet for PH311956

PDE4 (PDE4B) (NM_002600) Human Mass Spec Standard

Product data:

Product Type:	Mass Spec Standards
Description:	PDE4B MS Standard C13 and N15-labeled recombinant protein (NP_002591)
Species:	Human
Expression Host:	HEK293
Expression cDNA Clone or AA Sequence:	RC211956
Predicted MW:	83.2 kDa
Protein Sequence:	>RC211956 representing NM_002600 Red=Cloning site Green=Tags(s)

MKKSRSVMTVMADDNVKDYFECSLSKSYSSSSNTLGIDLWRGRRCCSGNLQLPPLSQRQSERARTPEGDG
ISRPTTLPLTTLPSIAITTVSQECFDVENGPSPGRSPLDPQASSAGLVLHATFPGHSQRRESFLYRSDS
DYDLSPKAMSRNSSLPSEQHGDDLIVTPFAQVLAASLRVNRNFTILTNLHGTSNKRSPAASQPPVSRVNP
QEESYQKLAMETLEELDWCILDQLETIQTYRSVSEMASNFKRMLNRELTHLSEMSRSGNQVSEYISNTFL
DKQNDVEIPSPTQKDREKKKQQLMTQISGVKMLMHSSLNNTSISRFGVNTENEDHLAKELEDLNKWL
NIFNVAGYSHNRPLTCIMYAIQERDLLKTRISSDTFITYMMTLEDHYHSDVAYHNSLHAADVAQSTHV
LLSTPALDAVFTDLEILAAIFAAAIDVDHPGVSNOFLINTNSELALMYNDESVLNHHLAVGFKLLQEE
HCDIFMNLTKKQRQTLRKMVIDMVLATDMSKHMSLLADLKTMTVETKKVTSQVLLLDNYTDRIQVLRNMV
HCADLSNPTKSLELYRQWTDRIEMEEFFQQGDKERERGMEISPMCDKHTASVEKSQVGFIDYIVHPLWETW
ADLVQPDQDILDTELDNRNRYQSMIPQSPSPPLDEQNRDCQGLMEKFQFELTLDEEDSEGPKEGEGHS
YFSSTKTLCVIDPENRDSLGETDIDIATEDKSPVDT

TRTRPLEQKLISEEDLAANDILDYKDDDDKV

Tag:	C-Myc/DDK
Purity:	> 80% as determined by SDS-PAGE and Coomassie blue staining
Concentration:	>0.05 µg/µL as determined by microplate BCA method
Labeling Method:	Labeled with [U- 13C6, 15N4]-L-Arginine and [U- 13C6, 15N2]-L-Lysine
Buffer:	25 mM Tris-HCl, 100 mM glycine, pH 7.3
Storage:	Store at -80°C. Avoid repeated freeze-thaw cycles.
Stability:	Stable for 3 months from receipt of products under proper storage and handling conditions.
RefSeq:	NP_002591



[View online »](#)

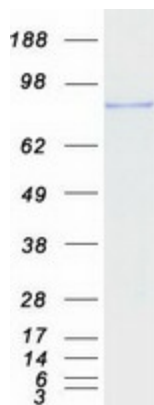
RefSeq Size:	4264
RefSeq ORF:	2208
Synonyms:	DPDE4; PDEIVB
Locus ID:	5142
UniProt ID:	Q07343 , X5DNX5
Cytogenetics:	1p31.3

Summary: This gene is a member of the type IV, cyclic AMP (cAMP)-specific, cyclic nucleotide phosphodiesterase (PDE) family. The encoded protein regulates the cellular concentrations of cyclic nucleotides and thereby play a role in signal transduction. Altered activity of this protein has been associated with schizophrenia and bipolar affective disorder. Alternative splicing and the use of alternative promoters results in multiple transcript variants encoding different isoforms. [provided by RefSeq, Jul 2014]

Protein Families: Druggable Genome

Protein Pathways: Progesterone-mediated oocyte maturation, Purine metabolism

Product images:



Coomassie blue staining of purified PDE4B protein (Cat# [TP311956]). The protein was produced from HEK293T cells transfected with PDE4B cDNA clone (Cat# [RC211956]) using MegaTran 2.0 (Cat# [TT210002]).