

Product datasheet for PH311920

AP1B1 (NM_001127) Human Mass Spec Standard

Product data:

Product Type:	Mass Spec Standards
Description:	AP1B1 MS Standard C13 and N15-labeled recombinant protein (NP_001118)
Species:	Human
Expression Host:	HEK293
Expression cDNA Clone or AA Sequence:	RC211920
Predicted MW:	104.6 kDa
Protein Sequence:	>RC211920 representing NM_001127 Red=Cloning site Green=Tags(s)

MTDSKYFTTTKKGEIFELKAEKLNDSKKEKKKEAVKKVIASMTVGKDVSAALFPDVVNMQTDNLELKKLVY
LYLMNYAKSQPDMAIMAVNTFVKDCEDPNPLIRALAVRTMGCIRVDKITEYLCEPLRKCLKDEDPPYVRKT
AAVCVAKLHDINAQLVEDQGFLLTKDLISDSNPMVVANAVAALSEIAESHSSNLLDLNPQSINKLLTA
LNECTEWGQIFILDCLANYMPKDDREAQSI CERVT PRLSHANSVAVL SAVKVLKMFEMLSKDLDDYGT
LKKLAPPLVTL SAEPELQYVALRNINLIVQKRPEILKHEMKVFFVKYNDPIYVKLEKLDIMIRLASQAN
IAQVLAELKEYATEVDVDFVRKAVRAIGRAIKVEQSAERCVSTLLDLIQTKVNYVVQEAIVVIKDIFRK
YPNKYESVIATL CENLDSLDEPEARAAMIWIVGEYAERIDNADELLESFLEGFHDESTQVQLQLLTAIVK
LFLKKTETQELVQVLSLATQSDNPDLRDRGYIWRLLSTDPVAAKEVVLAEKPLISEETDLIEPTLL
DELICYIGTLASVYHKPPSAFVEGGRGVVHKSLPPRTASSESAESPETAPTGAPPEQPDVIPAQGDLLG
DLLNLDLGPVSGPPLATSSVQMGAVDLLGGGLDSLMDPEPEGIGGTNFVAPPTAAV PANLGAFIGSGLS
DLFDLTSVGTLSGSYVAPKAVWL PAMKAKGLEISGTFTRQVGSISMDLQLTNKALQVMTDFAIQFNRS
FGLAAPLQVHAPLSPNQTV EISLPLSTVGSVMKMEPLNQLQVAVKNNIDVFYFSTLYPLHILFVEDGK
MDRQMFLATWKDIPNENEAQFQIRDCPLNAEAASSKLSQSNIFTVAKRNVEGQDMLYQSLKLTNGIWWLA
ELRIQPGNPSCTDLELSLKCRAPEVVSQHVVYQAYETILKN

TRTRPLEQKLI SEEDLAANDILDYKDDDDKV

Tag:	C-Myc/DDK
Purity:	> 80% as determined by SDS-PAGE and Coomassie blue staining
Concentration:	>0.05 µg/µL as determined by microplate BCA method
Labeling Method:	Labeled with [U- ¹³ C ₆ , ¹⁵ N ₄]-L-Arginine and [U- ¹³ C ₆ , ¹⁵ N ₂]-L-Lysine
Buffer:	25 mM Tris-HCl, 100 mM glycine, pH 7.3
Storage:	Store at -80°C. Avoid repeated freeze-thaw cycles.
Stability:	Stable for 3 months from receipt of products under proper storage and handling conditions.



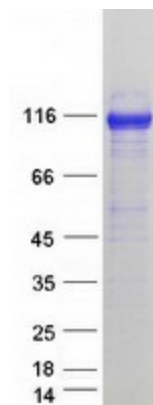
[View online >](#)

RefSeq:	NP_001118
RefSeq Size:	4194
RefSeq ORF:	2847
Synonyms:	ADTB1; AP105A; BAM22; CLAPB2; KIDAR
Locus ID:	162
UniProt ID:	Q10567
Cytogenetics:	22q12.2

Summary: Adaptor protein complex 1 is found at the cytoplasmic face of coated vesicles located at the Golgi complex, where it mediates both the recruitment of clathrin to the membrane and the recognition of sorting signals within the cytosolic tails of transmembrane receptors. This complex is a heterotetramer composed of two large, one medium, and one small adaptin subunit. The protein encoded by this gene serves as one of the large subunits of this complex and is a member of the adaptin protein family. This gene is a candidate meningioma gene. Alternative splicing results in multiple transcript variants. [provided by RefSeq, Oct 2009]

Protein Pathways: Lysosome

Product images:



Coomassie blue staining of purified AP1B1 protein (Cat# [TP311920]). The protein was produced from HEK293T cells transfected with AP1B1 cDNA clone (Cat# [RC211920]) using MegaTran 2.0 (Cat# [TT210002]).