

Product datasheet for PH311908

PALM2 (NM_053016) Human Mass Spec Standard

Product data:

Product Type:	Mass Spec Standards
Description:	PALM2 MS Standard C13 and N15-labeled recombinant protein (NP_443749)
Species:	Human
Expression Host:	HEK293
Expression cDNA Clone or AA Sequence:	RC211908
Predicted MW:	45.3 kDa
Protein Sequence:	>RC211908 representing NM_053016 Red=Cloning site Green=Tags(s)

MAEAE LHKERLQAIAEKRRKQTEIEGKRQQLDEQILLQHSKSKVLREKWLQGI PAGTAE EEEARRRQS
EEDEF RVKQLEDNIQRLEQEQIQTLESEESQISAKEQIILEKLEKTEKSFKDFQKGF SSTDGDAVNYISSQ
LPDLPI LCSR TAEPSPGQDGT SRAAAVYAMEINVEKDKQTGETKILSTSTIGPEGVHQKGVKYVDDGTKV
VYEVRS GGTVVENG VHKLSTK DVEELIQKAGQSSLGGGHVSERTVIADGSL SHPK EHM LCKEAKLEMVHK
SRKDHSSGNPGQQAQAPSAAGPEANLDQPVMTIFMGYQNI EDEEETKKVLGYDETIKAELVLIDEDDEKS
LREKTVTDVSTIDGNAELVSGRPVSDTTEPSSPEGKEESLATEPAPGTQKKKRCQCCVVM

TRTRPLEQKLI SEEDLAANDILDYKDDDDKV

Tag:	C-Myc/DDK
Purity:	> 80% as determined by SDS-PAGE and Coomassie blue staining
Concentration:	>0.05 µg/µL as determined by microplate BCA method
Labeling Method:	Labeled with [U- ¹³ C ₆ , ¹⁵ N ₄]-L-Arginine and [U- ¹³ C ₆ , ¹⁵ N ₂]-L-Lysine
Buffer:	25 mM Tris-HCl, 100 mM glycine, pH 7.3
Storage:	Store at -80°C. Avoid repeated freeze-thaw cycles.
Stability:	Stable for 3 months from receipt of products under proper storage and handling conditions.
RefSeq:	<u>NP_443749</u>
RefSeq Size:	9363
RefSeq ORF:	1233
Synonyms:	AKAP-2; AKAP-KL; AKAP2; AKAPKL; MISP2; PALM2; PALM2-AKAP2; PRKA2
Locus ID:	445815



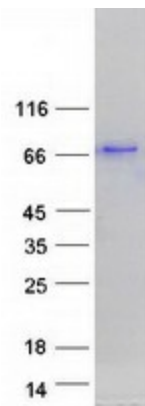
[View online »](#)

UniProt ID: [Q8IXS6](#)

Cytogenetics: 9q31.3

Summary: This gene belongs to the paralemmin downstream gene (PDG) family defined in PMID:22855693. Paralemmin downstream genes may have evolved contiguously with the paralemmin genes and are associated with other paralemmin paralogs in humans and several other taxa. The gene encodes three distinct protein isoforms, the PALM2 isoform, the AKAP2 isoform and the PALM2-AKAP2 isoform. The biological significance of the PALM2-AKAP2 isoforms is yet unknown. Earlier, PALM2 and AKAP2 were annotated as separate genes and PALM2-AKAP2 was annotated as a readthrough gene. [provided by RefSeq, May 2019]

Product images:



Coomassie blue staining of purified PALM2-AKAP2 protein (Cat# [TP311908]). The protein was produced from HEK293T cells transfected with PALM2-AKAP2 cDNA clone (Cat# [RC211908]) using MegaTran 2.0 (Cat# [TT210002]).