

Product datasheet for PH311896

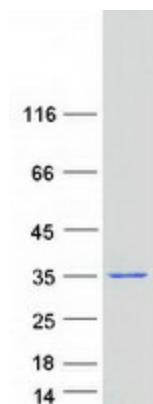
CCDC43 (NM_144609) Human Mass Spec Standard

Product data:

Product Type:	Mass Spec Standards
Description:	CCDC43 MS Standard C13 and N15-labeled recombinant protein (NP_653210)
Species:	Human
Expression Host:	HEK293
Expression cDNA Clone or AA Sequence:	RC211896
Predicted MW:	25.1 kDa
Protein Sequence:	>RC211896 representing NM_144609 Red=Cloning site Green=Tags(s) MAAPSEVAAIAPGEGDGGGGGFGSWLDGRLEALGVDRAVYGAYILGILQEEEEEEKLDALQGILSAFLEE DSL LNICK EIVERWSETQNVVTKVKEDEVQAIATLIEKQAQIVVKPRMVSEEEKQRKAALLAQYADVTD EEDEADEKDDSGATTMNI GSKLLFRNTNVEDVLNARKLERDSL RDESQRKKEQDKLQRERDKLAKQERK EKEKKRTQRGERKR TRTRPLEQKLI SEEDLAANDILDYKDDDDKV
Tag:	C-Myc/DDK
Purity:	> 80% as determined by SDS-PAGE and Coomassie blue staining
Concentration:	>0.05 µg/µL as determined by microplate BCA method
Labeling Method:	Labeled with [U- 13C6, 15N4]-L-Arginine and [U- 13C6, 15N2]-L-Lysine
Buffer:	25 mM Tris-HCl, 100 mM glycine, pH 7.3
Storage:	Store at -80°C. Avoid repeated freeze-thaw cycles.
Stability:	Stable for 3 months from receipt of products under proper storage and handling conditions.
RefSeq:	NP_653210
RefSeq Size:	2082
RefSeq ORF:	672
Locus ID:	124808
UniProt ID:	Q96MW1
Cytogenetics:	17q21.31



[View online »](#)

Product images:

Coomassie blue staining of purified CCDC43 protein (Cat# [TP311896]). The protein was produced from HEK293T cells transfected with CCDC43 cDNA clone (Cat# [RC211896]) using MegaTran 2.0 (Cat# [TT210002]).