

Product datasheet for PH311858

SRC (NM_198291) Human Mass Spec Standard

Product data:

Product Type:	Mass Spec Standards
Description:	SRC MS Standard C13 and N15-labeled recombinant protein (NP_938033)
Species:	Human
Expression Host:	HEK293
Expression cDNA Clone or AA Sequence:	RC211858
Predicted MW:	59.7 kDa
Protein Sequence:	>RC211858 representing NM_198291 Red =Cloning site Green =Tags(s)

MGSNKSQPKDASQRRRSLEPAENVHGAGGGAFFASQTPSKPASADGHRGPSAAFAPAAAEPKLFGGFNSS
 DTVTSPQIRAGPLAGGVTTFFVALYDYESRTETDLSEFKKGERLQIVNTEGDWLLAHSLSGTQGYIPSNYV
 APSDSIQAEWYFGKITRRESERLLLNAENPRGTFLVRESETTKAYCLSVSDFDNAKGLNVKHYKIRKL
 DSGGFYITSRTQFNSLQQLVAYYSKHADGLCHRLTTVCPTSKPQTQGLAKDAWEIPRESLRLEVKLGGGC
 FGEVWMGTWNGTTRVAIKTLKPGTMSPEAFLQEAQVMKKLRHEKLVQLYAVVSEEPYIYIVTEYMSKGSLL
 DFLKGETGKYLRPLQVDMAAQIASGMAYVERMNYVHRDLRAANILVGENLVCKVADFLARLIEDNEYT
 ARQGAKFPKWTAPAAALYGRFTIKSDVWSFGILLTELTGKRVPPGMVNREVLQDQVERGYRMPCPPEC
 PESLHDLMCQCWRKEPEERPTFEYLQAFLEDYFTSTEPQYQPGENL

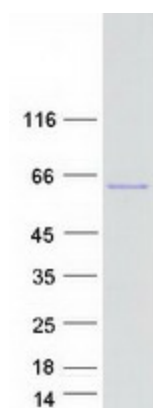
TRTRPLEQKLISEEDLAANDILDYKDDDDKV

Tag:	C-Myc/DDK
Purity:	> 80% as determined by SDS-PAGE and Coomassie blue staining
Concentration:	>0.05 µg/µL as determined by microplate BCA method
Labeling Method:	Labeled with [U- ¹³ C ₆ , ¹⁵ N ₄]-L-Arginine and [U- ¹³ C ₆ , ¹⁵ N ₂]-L-Lysine
Buffer:	25 mM Tris-HCl, 100 mM glycine, pH 7.3
Storage:	Store at -80°C. Avoid repeated freeze-thaw cycles.
Stability:	Stable for 3 months from receipt of products under proper storage and handling conditions.
RefSeq:	<u>NP_938033</u>
RefSeq Size:	4044
RefSeq ORF:	1608


[View online »](#)

Synonyms:	ASV; c-SRC; p60-Src; SRC1; THC6
Locus ID:	6714
UniProt ID:	P12931
Cytogenetics:	20q11.23
Summary:	This gene is highly similar to the v-src gene of Rous sarcoma virus. This proto-oncogene may play a role in the regulation of embryonic development and cell growth. The protein encoded by this gene is a tyrosine-protein kinase whose activity can be inhibited by phosphorylation by c-SRC kinase. Mutations in this gene could be involved in the malignant progression of colon cancer. Two transcript variants encoding the same protein have been found for this gene. [provided by RefSeq, Jul 2008]
Protein Families:	Druggable Genome, ES Cell Differentiation/IPS, Protein Kinase, Stem cell relevant signaling - JAK/STAT signaling pathway
Protein Pathways:	Adherens junction, Endocytosis, Epithelial cell signaling in Helicobacter pylori infection, ErbB signaling pathway, Focal adhesion, Gap junction, GnRH signaling pathway, Tight junction, VEGF signaling pathway

Product images:



Coomassie blue staining of purified SRC protein (Cat# [TP311858]). The protein was produced from HEK293T cells transfected with SRC cDNA clone (Cat# [RC211858]) using MegaTran 2.0 (Cat# [TT210002]).