

## Product datasheet for PH311854

### RABL2A (NM\_007082) Human Mass Spec Standard

#### Product data:

Product Type:	Mass Spec Standards
Description:	RABL2A MS Standard C13 and N15-labeled recombinant protein (NP_009013)
Species:	Human
Expression Host:	HEK293
Expression cDNA Clone or AA Sequence:	RC211854
Predicted MW:	26.2 kDa
Protein Sequence:	>RC211854 protein sequence Red=Cloning site Green=Tags(s)
	MAEDKTKPSELDQGKYDADDNVKIICLGDSAVGKSKLMERFLMDGFQPQQLSTYALTYKHTATVDGRTI LVDFWDTAGQERFQSMHASYYHKAHACIMVFDVQRKVTYRNLSTWYTELREFRPEIPCIVVANKIDADIN VTQKSFNFAKKFSLLPLYFVSAADGTNVVKLFNDAIRLAVSYKQNSQDFMDEIFQELNFSLEQEEEDVDP QEQSSSIETPSEEASPHS
	TRTRPLEQKLISEEDLAANDILDYKDDDDKV
Tag:	C-Myc/DDK
Purity:	> 80% as determined by SDS-PAGE and Coomassie blue staining
Concentration:	>0.05 µg/µL as determined by microplate BCA method
Labeling Method:	Labeled with [U- <sup>13</sup> C <sub>6</sub> , <sup>15</sup> N <sub>4</sub> ]-L-Arginine and [U- <sup>13</sup> C <sub>6</sub> , <sup>15</sup> N <sub>2</sub> ]-L-Lysine
Buffer:	25 mM Tris-HCl, 100 mM glycine, pH 7.3
Storage:	Store at -80°C. Avoid repeated freeze-thaw cycles.
Stability:	Stable for 3 months from receipt of products under proper storage and handling conditions.
RefSeq:	<u><a href="#">NP_009013</a></u>
RefSeq Size:	1143
RefSeq ORF:	687
Locus ID:	11159
UniProt ID:	<u><a href="#">Q9UBK7</a></u>
Cytogenetics:	2q14.1



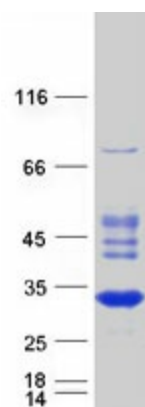
[View online »](#)

**Summary:**

This gene is a member of the RAB gene family which belongs to the RAS GTPase superfamily. The proteins in the family of RAS-related signaling molecules are small GTP-binding proteins that play important roles in the regulation of exocytotic and endocytotic pathways. This gene maps to the site of an ancestral telomere fusion event and may be a subtelomeric gene. Alternative splicing results in multiple transcript variants encoding different isoforms. [provided by RefSeq, Apr 2015]

**Protein Families:**

Druggable Genome

**Product images:**

Coomassie blue staining of purified RABL2A protein (Cat# [TP311854]). The protein was produced from HEK293T cells transfected with RABL2A cDNA clone (Cat# [RC211854]) using MegaTran 2.0 (Cat# [TT210002]).