

Product datasheet for PH311828

FBLIM1 (NM_001024216) Human Mass Spec Standard

Product data:

Product Type:	Mass Spec Standards
Description:	FBLIM1 MS Standard C13 and N15-labeled recombinant protein (NP_001019387)
Species:	Human
Expression Host:	HEK293
Expression cDNA Clone or AA Sequence:	RC211828
Predicted MW:	30.6 kDa
Protein Sequence:	>RC211828 representing NM_001024216 Red=Cloning site Green=Tags(s) MASKPEKRVASSVFITLAPPRRDVAVAEVQRQAVCEARRGRPWEAPAPMKTPEAGLAGRPSWTTTPGRAA ATVPAAPMQLFNGDICAFCCHKTVSPRELAVEAMKRQYHAQCFTCRTRRQLAGQSFYQKDGRLCEPCYQ DTLERCGKCGEVVRDHIIRALGQAFHPSCFTCVTCARCIGDESFALGSQNEVYCLDDFYRKFAPVCSICE NPIIPRDGKDAFKIECMGRNFHENCYRCEDCRILLSVEPTDQGCYPLNNHLFCKPCHVKRSAAGCC TRTRPLEQKLI SEEDLAANDILDYKDDDDKV
Tag:	C-Myc/DDK
Purity:	> 80% as determined by SDS-PAGE and Coomassie blue staining
Concentration:	>0.05 µg/µL as determined by microplate BCA method
Labeling Method:	Labeled with [U- ¹³ C ₆ , ¹⁵ N ₄]-L-Arginine and [U- ¹³ C ₆ , ¹⁵ N ₂]-L-Lysine
Buffer:	25 mM Tris-HCl, 100 mM glycine, pH 7.3
Storage:	Store at -80°C. Avoid repeated freeze-thaw cycles.
Stability:	Stable for 3 months from receipt of products under proper storage and handling conditions.
RefSeq:	NP_001019387
RefSeq Size:	2793
RefSeq ORF:	828
Synonyms:	CAL; FBLP-1; FBLP1
Locus ID:	54751
UniProt ID:	Q8WUP2

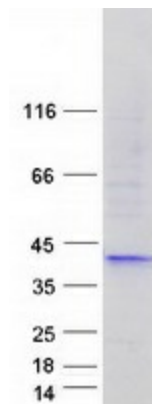


[View online »](#)

Cytogenetics: 1p36.21

Summary: This gene encodes a protein with an N-terminal filamin-binding domain, a central proline-rich domain, and, multiple C-terminal LIM domains. This protein localizes at cell junctions and may link cell adhesion structures to the actin cytoskeleton. This protein may be involved in the assembly and stabilization of actin-filaments and likely plays a role in modulating cell adhesion, cell morphology and cell motility. This protein also localizes to the nucleus and may affect cardiomyocyte differentiation after binding with the CSX/NKX2-5 transcription factor. Alternative splicing results in multiple transcript variants encoding different isoforms. [provided by RefSeq, Jul 2008]

Product images:



Coomassie blue staining of purified FBLIM1 protein (Cat# [TP311828]). The protein was produced from HEK293T cells transfected with FBLIM1 cDNA clone (Cat# [RC211828]) using MegaTran 2.0 (Cat# [TT210002]).