

## Product datasheet for PH311827

### SPRR2B (NM\_001017418) Human Mass Spec Standard

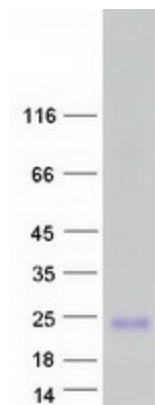
#### Product data:

Product Type:	Mass Spec Standards
Description:	SPRR2B MS Standard C13 and N15-labeled recombinant protein (NP_001017418)
Species:	Human
Expression Host:	HEK293
Expression cDNA Clone or AA Sequence:	RC211827
Predicted MW:	8 kDa
Protein Sequence:	<p>&gt;RC211827 protein sequence</p> <p>Red=Cloning site Green=Tags(s)</p> <p>MSYQQQCKQPCPPVCPTPKCPEPCPPPKCPEPCPPPKCPQPCPPQQCQQKYPPVTPSPPCQSKYPPKSK</p> <p>TRTRPLEQKLISEEDLAANDILDYKDDDDKV</p>
Tag:	C-Myc/DDK
Purity:	> 80% as determined by SDS-PAGE and Coomassie blue staining
Concentration:	>0.05 µg/µL as determined by microplate BCA method
Labeling Method:	Labeled with [U- 13C6, 15N4]-L-Arginine and [U- 13C6, 15N2]-L-Lysine
Buffer:	25 mM Tris-HCl, 100 mM glycine, pH 7.3
Storage:	Store at -80°C. Avoid repeated freeze-thaw cycles.
Stability:	Stable for 3 months from receipt of products under proper storage and handling conditions.
RefSeq:	<u><a href="#">NP_001017418</a></u>
RefSeq Size:	662
RefSeq ORF:	216
Locus ID:	6701
UniProt ID:	<u><a href="#">P35325</a></u>
Cytogenetics:	1q21.3


[View online »](#)

**Summary:**

Cross-linked envelope protein of keratinocytes. It is a keratinocyte protein that first appears in the cell cytosol, but ultimately becomes cross-linked to membrane proteins by transglutaminase. All that results in the formation of an insoluble envelope beneath the plasma membrane.[UniProtKB/Swiss-Prot Function]

**Product images:**


Coomassie blue staining of purified SPRR2B protein (Cat# [TP311827]). The protein was produced from HEK293T cells transfected with SPRR2B cDNA clone (Cat# [RC211827]) using MegaTran 2.0 (Cat# [TT210002]).