

Product datasheet for PH311810

RASGEF1C (NM_175062) Human Mass Spec Standard

Product data:

| | |
|---------------------------------------|--|
| Product Type: | Mass Spec Standards |
| Description: | RASGEF1C MS Standard C13 and N15-labeled recombinant protein (NP_778232) |
| Species: | Human |
| Expression Host: | HEK293 |
| Expression cDNA Clone or AA Sequence: | RC211810 |
| Predicted MW: | 52.7 kDa |
| Protein Sequence: | >RC211810 representing NM_175062 Red=Cloning site Green=Tags(s) |

MPQTLASADMVTPGSLSPPTPTDGEQAGQPLLDGAPSSASLETLIQHLVPTADYYPEKAYIFTFLLSS
RLFIEPRELLARVCHLCIEQQQLDKPVLDKARVRKFGPKLLQLLAEWTEFPRDFQEESTIGHLKDVVGR
IAPCDEAYRKRMLLQALHQKLAALRQGPEGLVGADKPISYRTKPPASIHRELLGVCSDPYTLAQLTH
VELERLRHIGPEEFVQAFVNKDPLASTKPCFSDKTSNLEAYVKWFNRLCYLVATEICMPAKKKQRAQVIE
FFIDVARECFNIGNFNSLMAIISGMNMPVSRLLKKTWAKVRTAKFFILEHQMDPTGNFCNYRTALRGAH
RSLTAHSSREKIVIPFFSLLIKDIYFLNEGCANRLPNGHVNFEEKFLELAKQVGEFITWKQVECPFEQDAS
ITHYLYTAPIFSEDGLYLASYESESPENQTEKERWKALRSSILGKT

TRTRPLEQKLISEEDLAANDILDYKDDDDKV

| | |
|------------------|--|
| Tag: | C-Myc/DDK |
| Purity: | > 80% as determined by SDS-PAGE and Coomassie blue staining |
| Concentration: | >0.05 µg/µL as determined by microplate BCA method |
| Labeling Method: | Labeled with [U- ¹³ C ₆ , ¹⁵ N ₄]-L-Arginine and [U- ¹³ C ₆ , ¹⁵ N ₂]-L-Lysine |
| Buffer: | 25 mM Tris-HCl, 100 mM glycine, pH 7.3 |
| Storage: | Store at -80°C. Avoid repeated freeze-thaw cycles. |
| Stability: | Stable for 3 months from receipt of products under proper storage and handling conditions. |
| RefSeq: | <u>NP_778232</u> |
| RefSeq Size: | 2216 |
| RefSeq ORF: | 1398 |
| Locus ID: | 255426 |



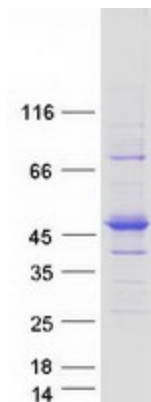
[View online »](#)

UniProt ID: [Q8N431](#)

Cytogenetics: 5q35.3

Summary: Guanine nucleotide exchange factor (GEF).[UniProtKB/Swiss-Prot Function]

Product images:



Coomassie blue staining of purified RASGEF1C protein (Cat# [TP311810]). The protein was produced from HEK293T cells transfected with RASGEF1C cDNA clone (Cat# [RC211810]) using MegaTran 2.0 (Cat# [TT210002]).