

Product datasheet for PH311801

SEC14L1 (NM_003003) Human Mass Spec Standard

Product data:

Product Type:	Mass Spec Standards
Description:	SEC14L1 MS Standard C13 and N15-labeled recombinant protein (NP_002994)
Species:	Human
Expression Host:	HEK293
Expression cDNA Clone or AA Sequence:	RC211801
Predicted MW:	81.1 kDa
Protein Sequence:	>RC211801 representing NM_003003 Red=Cloning site Green=Tags(s)

MVQKYQSPVRVYKYPFELIMAA YERRFPTCPLIPMFVGS DTVNEFKSEDAI HVIERRCKLDVDAPRLK
KIAGVDYVYFVQKNSLNSRERTLHIEAYNETFSNRVIINEHCCYTVHPENEDWTCFEQSASLDIKSFFGF
ESTVEKIAMKQYTSNIKKGKEIEYYLRQLEEEGITFVPRWSPSITPSSETSSSSSKKQAASMAVVIPE
AALKEGLSGDALSSPSAPEPVVGT PDDKLDADYIKRYLGDLTPLQESCLIRLRQWLQETHKGKIPKDEHI
LRFLRARDFNIDKAREIMCQSL TWRKQH QVDYILETWTPPQVLQDYYAGGWHHDKDGRPLYVLRGQMD
TKGLVRALGEEALLRYVLSINEEGLRRCEENTKVFGRPISSWTCLVDLEGLNMRHLWRPGVKALLRIIEV
VEANYPETLGRLLILRAPRVFPVLWTLVSPFIDNTRRKFLIYAGNDYQGGGLLDYIDKEIIPDFLSGE
CMCEVPEGGLVPKSLYRTAEELNEDLKLWTETIYQSASVFKGAPHEILIQIVDASSVITWDFDVCKGDI
VFNIYHSKRSPQPPKDSLGAHSITSPGGNNVQLIDKVVWQLGRDYSMVESPLICKEGESVQGS HVTRWPG
FYILQWKFHSMPCAASSLPRVDDVLA SLQVSSHCKKVMYYTEVIGSEDFRGSMTSLESSHSGFSQLSAA
TTSSSQSHSSMISR

TRTRPLEQKLI SEEDLAANDILDYKDDDDKV

Tag:	C-Myc/DDK
Purity:	> 80% as determined by SDS-PAGE and Coomassie blue staining
Concentration:	>0.05 µg/µL as determined by microplate BCA method
Labeling Method:	Labeled with [U- ¹³ C ₆ , ¹⁵ N ₄]-L-Arginine and [U- ¹³ C ₆ , ¹⁵ N ₂]-L-Lysine
Buffer:	25 mM Tris-HCl, 100 mM glycine, pH 7.3
Storage:	Store at -80°C. Avoid repeated freeze-thaw cycles.
Stability:	Stable for 3 months from receipt of products under proper storage and handling conditions.
RefSeq:	NP_002994

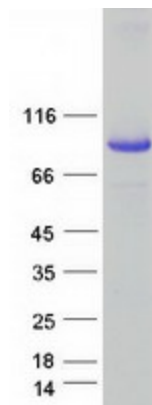


[View online »](#)

RefSeq Size:	5434
RefSeq ORF:	2145
Synonyms:	PRELID4A; SEC14L
Locus ID:	6397
UniProt ID:	Q92503 , A0A024R8V1 , Q59HE8
Cytogenetics:	17q25.2-q25.3

Summary: The protein encoded by this gene belongs to the SEC14 cytosolic factor family. It has similarity to yeast SEC14 and to Japanese flying squid RALBP which suggests a possible role of the gene product in an intracellular transport system. Multiple alternatively spliced transcript variants have been found for this gene; some variants represent read-through transcripts that include exons from the upstream gene C17orf86. [provided by RefSeq, Feb 2011]

Product images:



Coomassie blue staining of purified SEC14L1 protein (Cat# [TP311801]). The protein was produced from HEK293T cells transfected with SEC14L1 cDNA clone (Cat# [RC211801]) using MegaTran 2.0 (Cat# [TT210002]).