

Product datasheet for PH311728

CYP11A1 (NM_001099773) Human Mass Spec Standard

Product data:

Product Type:	Mass Spec Standards
Description:	CYP11A1 MS Standard C13 and N15-labeled recombinant protein (NP_001093243)
Species:	Human
Expression Host:	HEK293
Expression cDNA Clone or AA Sequence:	RC211728
Predicted MW:	42.6 kDa
Protein Sequence:	>RC211728 representing NM_001099773 Red=Cloning site Green=Tags(s) MAPEATKNFLPLLDVAVSRDFVSVLHRRRIKKAGSGNYSGDISDDLFRFAFESITNVIFGERQGMLEEVVNP EAQRFIDAIYQMFHTSVPMNLPPDLFRLFRTKTWKDHVAAWDVIFSKADIYTQNFYWELRQKGSVHHDY RGILYRLLGDSKMSFEDIKANVTEMLAGGVDTTSMTLQWHL YEMARNLKVQDMLRAEVLAAARHQAGDMA TMLQLVPLLKASIKETLRLHPISVTLQRYLVNDLVLRDYMIPAKTLVQVAIYALGREPTFFDPENFDPT RWLSKDKNITYFRNLGFGWGVQRCLGRRIAELEMIFLINMLENFRVEIQHLSDVGTTFNLILMPEKPIS FTFWPFNQEATQQ TRTRPLEQKLI SEEDLAANDILDYKDDDDKV
Tag:	C-Myc/DDK
Purity:	> 80% as determined by SDS-PAGE and Coomassie blue staining
Concentration:	>0.05 µg/µL as determined by microplate BCA method
Labeling Method:	Labeled with [U- ¹³ C ₆ , ¹⁵ N ₄]-L-Arginine and [U- ¹³ C ₆ , ¹⁵ N ₂]-L-Lysine
Buffer:	25 mM Tris-HCl, 100 mM glycine, pH 7.3
Storage:	Store at -80°C. Avoid repeated freeze-thaw cycles.
Stability:	Stable for 3 months from receipt of products under proper storage and handling conditions.
RefSeq:	NP_001093243
RefSeq Size:	2010
RefSeq ORF:	1089
Synonyms:	CYP11A; CYPXIA1; P450SCC
Locus ID:	1583



[View online »](#)

UniProt ID: [P05108](#), [P05108-2](#)

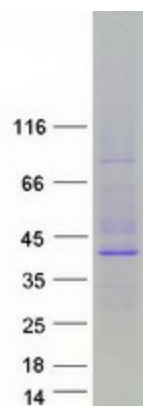
Cytogenetics: 15q24.1

Summary: This gene encodes a member of the cytochrome P450 superfamily of enzymes. The cytochrome P450 proteins are monooxygenases which catalyze many reactions involved in drug metabolism and synthesis of cholesterol, steroids and other lipids. This protein localizes to the mitochondrial inner membrane and catalyzes the conversion of cholesterol to pregnenolone, the first and rate-limiting step in the synthesis of the steroid hormones. Two transcript variants encoding different isoforms have been found for this gene. The cellular location of the smaller isoform is unclear since it lacks the mitochondrial-targeting transit peptide. [provided by RefSeq, Jul 2008]

Protein Families: Druggable Genome, P450

Protein Pathways: C21-Steroid hormone metabolism, Metabolic pathways

Product images:



Coomassie blue staining of purified CYP11A1 protein (Cat# [TP311728]). The protein was produced from HEK293T cells transfected with CYP11A1 cDNA clone (Cat# [RC211728]) using MegaTran 2.0 (Cat# [TT210002]).