

## Product datasheet for PH311711

### SLURP2 (NM\_177458) Human Mass Spec Standard

#### Product data:

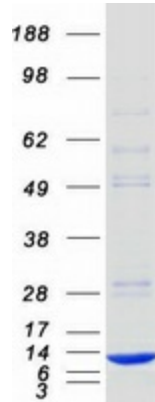
Product Type:	Mass Spec Standards
Description:	LYNX1 MS Standard C13 and N15-labeled recombinant protein (NP_803253)
Species:	Human
Expression Host:	HEK293
Expression cDNA Clone or AA Sequence:	RC211711
Predicted MW:	10 kDa
Protein Sequence:	>RC211711 representing NM_177458 <b>Red</b> =Cloning site <b>Green</b> =Tags(s)  MQLGTGLLLAAVLSLQLAAAEAIWCHQCTGFGGCSHGSRCLRSTHCVTATTRVLSNTEDLPLVTMCHI GCPDIPSLGLGPYYSIACCQTSKCNHD  <b>TRTRPLEQKLISEEDLAANDILDYKDDDDKV</b>
Tag:	C-Myc/DDK
Purity:	> 80% as determined by SDS-PAGE and Coomassie blue staining
Concentration:	>0.05 µg/µL as determined by microplate BCA method
Labeling Method:	Labeled with [U- 13C6, 15N4]-L-Arginine and [U- 13C6, 15N2]-L-Lysine
Buffer:	25 mM Tris-HCl, 100 mM glycine, pH 7.3
Storage:	Store at -80°C. Avoid repeated freeze-thaw cycles.
Stability:	Stable for 3 months from receipt of products under proper storage and handling conditions.
RefSeq:	<a href="#">NP_803253</a>
RefSeq Size:	589
RefSeq ORF:	291
Synonyms:	SLURP-2
Locus ID:	432355
UniProt ID:	<a href="#">P0DP57</a>
Cytogenetics:	8q24.3



[View online »](#)

**Summary:**

This gene encodes a novel, secreted member of the Ly6/uPAR (LU) superfamily of proteins containing the unique three-finger LU domain. This gene is mainly expressed in epithelial cells, including skin and keratinocytes, and is up-regulated in psoriatic skin lesions, suggesting its involvement in the pathophysiology of psoriasis. Alternatively spliced transcript variants have been found for this gene. Read-through transcription from the neighboring upstream gene (LYNX1) generates naturally-occurring transcripts (LYNX1-SLURP2) that encode a fusion protein comprised of sequence sharing identity with each individual gene product. [provided by RefSeq, Sep 2017]

**Product images:**

Coomassie blue staining of purified SLURP2 protein (Cat# [TP311711]). The protein was produced from HEK293T cells transfected with SLURP2 cDNA clone (Cat# [RC211711]) using MegaTran 2.0 (Cat# [TT210002]).