

Product datasheet for PH311676

PKC mu (PRKD1) (NM_002742) Human Mass Spec Standard

Product data:

Product Type:	Mass Spec Standards
Description:	PRKD1 MS Standard C13 and N15-labeled recombinant protein (NP_002733)
Species:	Human
Expression Host:	HEK293
Expression cDNA Clone or AA Sequence:	RC211676
Predicted MW:	101.5 kDa
Protein Sequence:	>RC211676 representing NM_002742 Red=Cloning site Green=Tags(s)

MSAPPVLRPPSPLLPVAAAAAAAAAALVPGSGPGPAPFLAPVAAPVGGISFHLQIGLSREPVLQLLQDSSG
DYSLAHVREMACSIVDQKFPECGFYGMYDKILLFRHDPTSENILQLVKAASDIQEGDLIEVVLASATFE
DFQIRPHALFVHSYRAPAFCDHCGEMLWGLVRQGLKCEGCLNYHKRCAFKIPNNCSGVRRRRLSNVSLT
GVSTIRTSSAELSTSAPDEPLLQKSPSEF IGREKRSNSQSYIGRPIHLDKILMSKVKVPHTFVIHSYTR
PTVCQYCKLLKGLFRQGLQCKDCRFNCHKRCAPKVPNNCLGEVTINGDLLSPGAESDVVMEEGSDDNDS
ERNSGLMDDMEEAMVQDAEMAMAECQNDSEGEMQDPDPDHEDANRTISPSTSNNIPLMRVVQSVKHTKRKS
STVMKEGWMVHYTSKDTLRKRHYWRLDSKCITLQNDTGSRYEIKIPLSEILSLEPVKTSALIPNGANPH
CFEITTANVVVVYGENVNPSSPSPNNSVLTSGVGADVARMWEIAIQHALMPVIPKGSSVGTGTNLHRDI
SVSISVSNQCQIQENVDIQSTVYQIFPDEVLGSGQFIVYGGKHKRKTGRDVAIKIIDKLRFPTKQESQLRNE
VAIQNLHHPGVNLECMFETPERVFVMEKLGDMLEMLISSEKGRLEPHITKFLITQILVALRHLHFK
NIVHCDLKPENVLLASADPFQVKLCDFGFARIIGEKSFRRSVVGTAYLAPEVLRNKGYNRSLDMWSVG
VYIYVSLSGTFPFNEDEDIHDQIQNAAFMYPPNPWKEISHEAIDLINLLQVKMRKRYSDKTLSPWLQ
DYQTWLDLRELECKIGERYITHESDDLWEKYAGEQLQYPTHLINPSASHSDTPETEETEMKALGERVS
IL

TRTRPLEQKLI SEEDLAANDILDYKDDDDKV

Tag:	C-Myc/DDK
Purity:	> 80% as determined by SDS-PAGE and Coomassie blue staining
Concentration:	>0.05 µg/µL as determined by microplate BCA method
Labeling Method:	Labeled with [U- ¹³ C ₆ , ¹⁵ N ₄]-L-Arginine and [U- ¹³ C ₆ , ¹⁵ N ₂]-L-Lysine
Buffer:	25 mM Tris-HCl, 100 mM glycine, pH 7.3
Storage:	Store at -80°C. Avoid repeated freeze-thaw cycles.
Stability:	Stable for 3 months from receipt of products under proper storage and handling conditions.



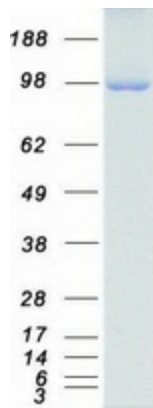
[View online »](#)

RefSeq:	NP_002733
RefSeq Size:	3742
RefSeq ORF:	2736
Synonyms:	CHDED; PKC-MU; PKCM; PKD; PRKCM
Locus ID:	5587
UniProt ID:	Q15139
Cytogenetics:	14q12

Summary: The protein encoded by this gene is a serine/threonine protein kinase involved in many cellular processes, including Golgi body membrane integrity and transport, cell migration and differentiation, MAPK8/JNK1 and Ras pathway signaling, MAPK1/3 (ERK1/2) pathway signaling, cell survival, and regulation of cell shape and adhesion. [provided by RefSeq, Jan 2017]

Protein Families: Druggable Genome, Protein Kinase

Product images:



Coomassie blue staining of purified PRKD1 protein (Cat# [TP311676]). The protein was produced from HEK293T cells transfected with PRKD1 cDNA clone (Cat# [RC211676]) using MegaTran 2.0 (Cat# [TT210002]).