

Product datasheet for PH311658

Collagen X (COL10A1) (NM_000493) Human Mass Spec Standard

Product data:

Product Type:	Mass Spec Standards
Description:	COL10A1 MS Standard C13 and N15-labeled recombinant protein (NP_000484)
Species:	Human
Expression Host:	HEK293
Expression cDNA Clone or AA Sequence:	RC211658
Predicted MW:	66.16 kDa
Protein Sequence:	>RC211658 representing NM_000493 Red=Cloning site Green=Tags(s)

MLPQIPFLLLVSLLNVHGVFYAERYQMPTGIKGPLNPKTKQFFIPYTIKSKGIAVRGEQGTGPPGPAGP
RGHPGPSGPPGKPGYGSPLQGEPLPGPPGPSAVGKPGVPLPGKPGERGPYGPKGVDVGPAGLPGPRGP
PGPPGIPGAGISVPGKPGQQGPTGAPGPRGFPGEKAGVPMNGQKGMGYGAPGRPGERGLPGPQGP
TGPSGPPGVGKRGENGVPQPGIKGDRGFPGEMGPIGPPGQGGPPGERGPEGIGKPGAAGAPQPGIPGT
KGLPGAPGIAAGPPGPPGFKPLPGLKGERGAPLPGGPGAKGEQGPAGLPGKPLTGPPGNMGPQGPKG
IPGSHGLPGPKGETGPAGPAGYPGAKGERGSPGSDGKPGYGPGLDGPKNPGLPGKGDVGVGPPGL
PGPVGPAGAKGMPGHNGEAGPRGAPGIPGTRGPIGPPGIPGFPKSGDPGSPGPPGAGIATKGLNGPTG
PPGPPGRHSGEPGLPGPPGPPGPPGQAVMPEGFIKAGQRPVSLSGTPLVSNQGVGTGMPVSAFTVILSK
AYPAIGTPIPFDKILYNRQQHYDPRGTGIFTCQIPGIYYFSYHVHVKGTHVWVGLYKNGTPVMYTYDEYTK
GYLDQASGSAIIDLTENDQVWLQLPNAESNGLYSSEYVHSSFSGLVAPM

TRTRPLEQKLISEEDLAANDILDYKDDDDKV

Tag:	C-Myc/DDK
Purity:	> 80% as determined by SDS-PAGE and Coomassie blue staining
Concentration:	>0.05 µg/µL as determined by microplate BCA method
Labeling Method:	Labeled with [U- ¹³ C ₆ , ¹⁵ N ₄]-L-Arginine and [U- ¹³ C ₆ , ¹⁵ N ₂]-L-Lysine
Buffer:	25 mM Tris-HCl, 100 mM glycine, pH 7.3
Storage:	Store at -80°C. Avoid repeated freeze-thaw cycles.
Stability:	Stable for 3 months from receipt of products under proper storage and handling conditions.
RefSeq:	NP_000484
RefSeq Size:	3285



[View online »](#)

RefSeq ORF: 2040

Locus ID: 1300

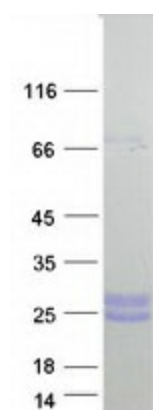
UniProt ID: [Q03692](#)

Cytogenetics: 6q22.1

Summary: This gene encodes the alpha chain of type X collagen, a short chain collagen expressed by hypertrophic chondrocytes during endochondral ossification. Unlike type VIII collagen, the other short chain collagen, type X collagen is a homotrimer. Mutations in this gene are associated with Schmid type metaphyseal chondrodysplasia (SMCD) and Japanese type spondylometaphyseal dysplasia (SMD). [provided by RefSeq, Jul 2008]

Protein Families: Druggable Genome

Product images:



Coomassie blue staining of purified COL10A1 protein (Cat# [TP311658]). The protein was produced from HEK293T cells transfected with COL10A1 cDNA clone (Cat# [RC211658]) using MegaTran 2.0 (Cat# [TT210002]).