

Product datasheet for PH311598

CLEC10A (NM_006344) Human Mass Spec Standard

Product data:

Product Type:	Mass Spec Standards
Description:	CLEC10A MS Standard C13 and N15-labeled recombinant protein (NP_006335)
Species:	Human
Expression Host:	HEK293
Expression cDNA Clone or AA Sequence:	RC211598
Predicted MW:	32.7 kDa
Protein Sequence:	>RC211598 representing NM_006344 Red=Cloning site Green=Tags(s) MTRTYENFQYLENKVKVQGFKNGLPLPLQSLQLRLCSGPCHLLLSLGLGLLLLVIICVVGFGNSKFFQRDLY TLRTDFSNFTSNTVAEIQALTSQGSLEETIASLKAIEVEGFKQERQAVHSEMLLRVQQLVQDLKKLTCQV ATLNNNGEEASTEGTCCPVNWEHQDSCYWFSHSGMSWAEAEKYCQLKNAHLVVINSREEQNFVQKYLGS AYTWMGLSDPEGAWKWVDGTDYATGFQNWKPGQPDDWQGHGLGGGEDCAHFHPDGRWDDVCQRPYHWVC EAGLGQTSQESH TRTRPLEQKLISEEDLAANDILDYKDDDDKV
Tag:	C-Myc/DDK
Purity:	> 80% as determined by SDS-PAGE and Coomassie blue staining
Concentration:	>0.05 µg/µL as determined by microplate BCA method
Labeling Method:	Labeled with [U- ¹³ C ₆ , ¹⁵ N ₄]-L-Arginine and [U- ¹³ C ₆ , ¹⁵ N ₂]-L-Lysine
Buffer:	25 mM Tris-HCl, 100 mM glycine, pH 7.3
Storage:	Store at -80°C. Avoid repeated freeze-thaw cycles.
Stability:	Stable for 3 months from receipt of products under proper storage and handling conditions.
RefSeq:	NP_006335
RefSeq Size:	1716
RefSeq ORF:	876
Synonyms:	CD301; CLECSF13; CLECSF14; HML; HML2; MGL
Locus ID:	10462



[View online »](#)

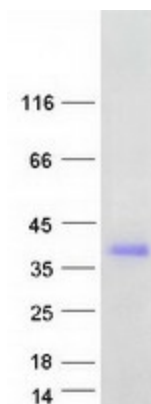
UniProt ID: [Q8IUN9](#)

Cytogenetics: 17p13.1

Summary: This gene encodes a member of the C-type lectin/C-type lectin-like domain (CTL/CTLD) superfamily. Members of this family share a common protein fold and have diverse functions, such as cell adhesion, cell-cell signalling, glycoprotein turnover, and roles in inflammation and immune response. The encoded type 2 transmembrane protein may function as a cell surface antigen. Two transcript variants encoding distinct isoforms have been identified for this gene. [provided by RefSeq, Jul 2008]

Protein Families: Transmembrane

Product images:



Coomassie blue staining of purified CLEC10A protein (Cat# [TP311598]). The protein was produced from HEK293T cells transfected with CLEC10A cDNA clone (Cat# [RC211598]) using MegaTran 2.0 (Cat# [TT210002]).