

Product datasheet for PH311569

CPLX4 (NM_181654) Human Mass Spec Standard

Product data:

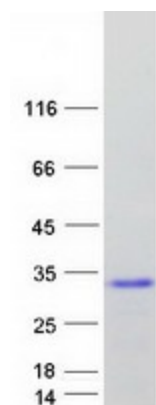
Product Type:	Mass Spec Standards
Description:	CPLX4 MS Standard C13 and N15-labeled recombinant protein (NP_857637)
Species:	Human
Expression Host:	HEK293
Expression cDNA Clone or AA Sequence:	RC211569
Predicted MW:	18.3 kDa
Protein Sequence:	<p>>RC211569 protein sequence</p> <p>Red=Cloning site Green=Tags(s)</p> <p>MAFLMKSMISNQVKNLGGGGSEENKEEGASDPAAAQGMTRREEYEEYQKQMIIEEKMERDAAFTQKKAER ACLRVHLREKYRLPKSEMDENQIQMAGDDVDLPEDLRKMVDEDQEEEEEDKDSILGQIQNLQNMDLDTIKE KAAQTFTEIKQTAEQKCSVM</p> <p>TRTRPLEQKLISEEDLAANDILDYKDDDDKV</p>
Tag:	C-Myc/DDK
Purity:	> 80% as determined by SDS-PAGE and Coomassie blue staining
Concentration:	>0.05 µg/µL as determined by microplate BCA method
Labeling Method:	Labeled with [U- ¹³ C ₆ , ¹⁵ N ₄]-L-Arginine and [U- ¹³ C ₆ , ¹⁵ N ₂]-L-Lysine
Buffer:	25 mM Tris-HCl, 100 mM glycine, pH 7.3
Storage:	Store at -80°C. Avoid repeated freeze-thaw cycles.
Stability:	Stable for 3 months from receipt of products under proper storage and handling conditions.
RefSeq:	NP_857637
RefSeq Size:	1980
RefSeq ORF:	480
Synonyms:	CPX-IV; CPXIV
Locus ID:	339302
UniProt ID:	Q7Z7G2


[View online »](#)

Cytogenetics: 18q21.32

Summary: This gene likely encodes a member of the complexin family. The encoded protein may be involved in synaptic vesicle exocytosis. [provided by RefSeq, Jan 2009]

Product images:



Coomassie blue staining of purified CPLX4 protein (Cat# [TP311569]). The protein was produced from HEK293T cells transfected with CPLX4 cDNA clone (Cat# [RC211569]) using MegaTran 2.0 (Cat# [TT210002]).