

Product datasheet for PH311556

ethanolamine kinase (ETNK1) (NM_001039481) Human Mass Spec Standard

Product data:

Product Type:	Mass Spec Standards
Description:	ETNK1 MS Standard C13 and N15-labeled recombinant protein (NP_001034570)
Species:	Human
Expression Host:	HEK293
Expression cDNA Clone or AA Sequence:	RC211556
Predicted MW:	27.8 kDa
Protein Sequence:	>RC211556 representing NM_001039481 Red =Cloning site Green =Tags(s) MLCGRPRSSSDNRNRLRERAGLSSAAVQTRIGNSAASRRSPAARPPVPAPPALPRGRPGEGETSLSAPA VLVVAVAVVVVVVSAVAVAMANYIHVPPGSPEVPKLNVTVQDQEEHRCREGALSLQLRPHWDPQEVTL QLFDTGITNKLIGCYVGMTMEDVVLVRIYGNKTELLVDRDEEVKSFRVLQAHGCAPQLYCTFNNGLCYEF IQGEALDPKHVCNPAIFSLSSLTLCKGKTTRCFGLTGCGRSRLLSFF TR TRPLEQKLI SEEDLA ANDILDYK DDDDK V
Tag:	C-Myc/DDK
Purity:	> 80% as determined by SDS-PAGE and Coomassie blue staining
Concentration:	>0.05 µg/µL as determined by microplate BCA method
Labeling Method:	Labeled with [U- ¹³ C ₆ , ¹⁵ N ₄]-L-Arginine and [U- ¹³ C ₆ , ¹⁵ N ₂]-L-Lysine
Buffer:	25 mM Tris-HCl, 100 mM glycine, pH 7.3
Storage:	Store at -80°C. Avoid repeated freeze-thaw cycles.
Stability:	Stable for 3 months from receipt of products under proper storage and handling conditions.
RefSeq:	NP_001034570
RefSeq Size:	910
RefSeq ORF:	774
Synonyms:	EKI; EK1; EK11; Nbla10396
Locus ID:	55500
UniProt ID:	Q9HBU6 , Q86U68



[View online »](#)

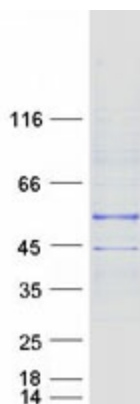
Cytogenetics: 12p12.1

Summary: This gene encodes an ethanolamine kinase, which functions in the first committed step of the phosphatidylethanolamine synthesis pathway. This cytosolic enzyme is specific for ethanolamine and exhibits negligible kinase activity on choline. Alternative splicing results in multiple transcript variants encoding distinct isoforms. [provided by RefSeq, Jul 2008]

Protein Families: Druggable Genome, Transmembrane

Protein Pathways: Glycerophospholipid metabolism, Metabolic pathways

Product images:



Coomassie blue staining of purified ETNK1 protein (Cat# [TP311556]). The protein was produced from HEK293T cells transfected with ETNK1 cDNA clone (Cat# [RC211556]) using MegaTran 2.0 (Cat# [TT210002]).