

Product datasheet for PH311537

COP (CARD16) (NM_052889) Human Mass Spec Standard

Product data:

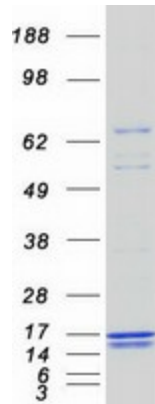
Product Type:	Mass Spec Standards
Description:	CARD16 MS Standard C13 and N15-labeled recombinant protein (NP_443121)
Species:	Human
Expression Host:	HEK293
Expression cDNA Clone or AA Sequence:	RC211537
Predicted MW:	10.6 kDa
Protein Sequence:	>RC211537 representing NM_052889 Red=Cloning site Green=Tags(s) MRKAMADKVLKEKRKLFIHSMGEGTINGLLDELLQTRVLNQEEMEKVKRENATVMDKTRALIDSVIPKGA QACQCITYICEEDSYLAETLGLSAGPIPGN TRTRPLEQKLISEEDLAANDILDYKDDDDKV
Tag:	C-Myc/DDK
Purity:	> 80% as determined by SDS-PAGE and Coomassie blue staining
Concentration:	>0.05 µg/µL as determined by microplate BCA method
Labeling Method:	Labeled with [U- 13C6, 15N4]-L-Arginine and [U- 13C6, 15N2]-L-Lysine
Buffer:	25 mM Tris-HCl, 100 mM glycine, pH 7.3
Storage:	Store at -80°C. Avoid repeated freeze-thaw cycles.
Stability:	Stable for 3 months from receipt of products under proper storage and handling conditions.
RefSeq:	NP_443121
RefSeq Size:	758
RefSeq ORF:	303
Synonyms:	COP; COP1; PSEUDO-ICE
Locus ID:	114769
UniProt ID:	Q5EG05
Cytogenetics:	11q22.3



[View online »](#)

Summary:

Caspase inhibitor. Acts as a regulator of procaspase-1/CASP1 activation implicated in the regulation of the proteolytic maturation of pro-interleukin-1 beta (IL1B) and its release during inflammation. Inhibits the release of IL1B in response to LPS in monocytes. Also induces NF-kappa-B activation during the pro-inflammatory cytokine response. Also able to inhibit CASP1-mediated neuronal cell death, TNF-alpha, hypoxia-, UV-, and staurosporine-mediated cell death but not ER stress-mediated cell death. Acts by preventing activation of caspases CASP1 and CASP4, possibly by preventing the interaction between CASP1 and RIPK2. [UniProtKB/Swiss-Prot Function]

Product images:

Coomassie blue staining of purified CARD16 protein (Cat# [TP311537]). The protein was produced from HEK293T cells transfected with CARD16 cDNA clone (Cat# [RC211537]) using MegaTran 2.0 (Cat# [TT210002]).