

Product datasheet for PH311525

SOX6 (NM_017508) Human Mass Spec Standard

Product data:

Product Type:	Mass Spec Standards
Description:	SOX6 MS Standard C13 and N15-labeled recombinant protein (NP_059978)
Species:	Human
Expression Host:	HEK293
Expression cDNA Clone or AA Sequence:	RC211525
Predicted MW:	89.2 kDa
Protein Sequence:	>RC211525 representing NM_017508 Red=Cloning site Green=Tags(s)
	MGRMSSKQATSPFACAADGEDAMTQDLTSREKEEGSDQHVASHLPLHPIMHNKPHSEELPTLVSTIQQDA DWDSVLSSQQRMESENKCLSLYSFRNTSTSPHKPDEGSRDREIMTSVTFGTPERRKGLADVVDTLKQK KLEEMTRTEQEDSSCMEKLLSKDWKEKMERLNTSELLGEIKGTPESLAEKERQLSTMITQLISLREQLLA AHDEQKKLAASQIEKQRQMDLARQQEQIARQQQQLLQQQHINLLQQQIQVQGHMPLMIPFPHDQR TLAAAAAQQGFLFPPGITYKPGDNYPVQFIPSTMAAAAASGLSPLQLQLYAAQLASMQVSPGAKMPST PQPPNTAGTVSPTGIKNEKRGTSPTVQVDEAAAQPLNLSRPKTAEPVKSPTSPTQNLFPASKTSPVNL PNKSSIPSPIGSSLGRGSSLGKWKSQHQEETYELDILSSLNSPALFGDQDTVMKAIQEARKMREIQREQ QQQPHGVDGKLLSSINMGLNSCRNEKERTFENLGPQLTGKSNEDGKLGPGVIDLTRPEDAEGSKAMNG SAAKLQYYCWPTGGATVAEARVYRDARGASSEPHIKRPMNAFMVWAKDERRKILQAFPMHNSNISKI LGSRWKSMNQEKPYYEEQARLSKIHLEKYPNYKPRPKRTCIVDGKCLRIGEYKQLMRSRRQEMRQF FTVGQQPQIPITGTGVVYPGAIMATTTPSPQMTSDCSSTSASPEPSLPVIQSTYGMKTDGGS LAGNEM INGEDEMEMYDDYEDDPKSDYSSENEAPEAVSAN
	TRTRPLEQKLISEEDLAANDILDYKDDDDKV
Tag:	C-Myc/DDK
Purity:	> 80% as determined by SDS-PAGE and Coomassie blue staining
Concentration:	>0.05 µg/µL as determined by microplate BCA method
Labeling Method:	Labeled with [U- ¹³ C ₆ , ¹⁵ N ₄]-L-Arginine and [U- ¹³ C ₆ , ¹⁵ N ₂]-L-Lysine
Buffer:	25 mM Tris-HCl, 100 mM glycine, pH 7.3
Storage:	Store at -80°C. Avoid repeated freeze-thaw cycles.
Stability:	Stable for 3 months from receipt of products under proper storage and handling conditions.
RefSeq:	NP_059978



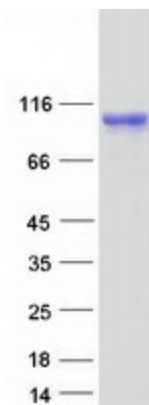
[View online >](#)

RefSeq Size:	5158
RefSeq ORF:	2412
Synonyms:	HSSOX6; SOXD; TOLCAS
Locus ID:	55553
UniProt ID:	P35712
Cytogenetics:	11p15.2

Summary: This gene encodes a member of the D subfamily of sex determining region y-related transcription factors that are characterized by a conserved DNA-binding domain termed the high mobility group box and by their ability to bind the minor groove of DNA. The encoded protein is a transcriptional activator that is required for normal development of the central nervous system, chondrogenesis and maintenance of cardiac and skeletal muscle cells. The encoded protein interacts with other family members to cooperatively activate gene expression. Alternative splicing results in multiple transcript variants.[provided by RefSeq, Mar 2009]

Protein Families: Transcription Factors

Product images:



Coomassie blue staining of purified SOX6 protein (Cat# [TP311525]). The protein was produced from HEK293T cells transfected with SOX6 cDNA clone (Cat# [RC211525]) using MegaTran 2.0 (Cat# [TT210002]).