

## Product datasheet for PH311519

### NIT1 (NM\_005600) Human Mass Spec Standard

#### Product data:

Product Type:	Mass Spec Standards
Description:	NIT1 MS Standard C13 and N15-labeled recombinant protein (NP_005591)
Species:	Human
Expression Host:	HEK293
Expression cDNA Clone or AA Sequence:	RC211519
Predicted MW:	35.7 kDa
Protein Sequence:	>RC211519 representing NM_005600 Red=Cloning site Green=Tags(s)  MLGFITRPPHRFLSLLCPGLRIPQLSVLCAQPRPRAMAISSSSCELPLVAVCQVTSTPDKQQNFKTC AEL VREAARLGACLAFLPEAFDFIARDPAETLHLSEPLGGKLL E EY TQLARECGLWLSLGGFHERGQDWEQTQ KIYNCHVLLNSKGAVVATYRKTHLCDVEIPGQGP M C E S N S T M P G P S L E S P V S T P A G K I G L A V C Y D M R F P E LSLALAQA G A E I L T Y P S A F G S I T G P A H W E V L L R A R A I E T Q C Y V V A A A Q C G R H H E K R A S Y G H S M V V D P W G T V V A R C S E G P G L C L A R I D L N Y L R Q L R R H L P V F Q H R R P D L Y G N L G H P L S  TRTRPLEQKLI SEEDLAANDILDYKDDDDKV
Tag:	C-Myc/DDK
Purity:	> 80% as determined by SDS-PAGE and Coomassie blue staining
Concentration:	>0.05 µg/µL as determined by microplate BCA method
Labeling Method:	Labeled with [U- 13C6, 15N4]-L-Arginine and [U- 13C6, 15N2]-L-Lysine
Buffer:	25 mM Tris-HCl, 100 mM glycine, pH 7.3
Storage:	Store at -80°C. Avoid repeated freeze-thaw cycles.
Stability:	Stable for 3 months from receipt of products under proper storage and handling conditions.
RefSeq:	<u>NP_005591</u>
RefSeq Size:	1385
RefSeq ORF:	981
Locus ID:	4817
UniProt ID:	<u>Q86X76</u>

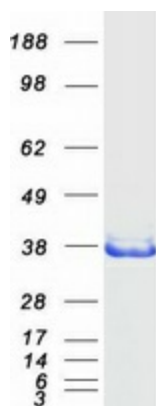


[View online »](#)

Cytogenetics: 1q23.3

**Summary:** This gene encodes a member of the nitrilase protein family with homology to bacterial and plant nitrilases, enzymes that cleave nitriles and organic amides to the corresponding carboxylic acids plus ammonia. Multiple transcript variants encoding different isoforms have been found for this gene. [provided by RefSeq, Jun 2010]

**Product images:**



Coomassie blue staining of purified NIT1 protein (Cat# [TP311519]). The protein was produced from HEK293T cells transfected with NIT1 cDNA clone (Cat# [RC211519]) using MegaTran 2.0 (Cat# [TT210002]).