

## Product datasheet for PH311478

### Cellular Apoptosis Susceptibility (CSE1L) (NM\_001316) Human Mass Spec Standard

#### Product data:

Product Type:	Mass Spec Standards
Description:	CSE1L MS Standard C13 and N15-labeled recombinant protein (NP_001307)
Species:	Human
Expression Host:	HEK293
Expression cDNA Clone or AA Sequence:	RC211478
Predicted MW:	110.4 kDa
Protein Sequence:	>RC211478 protein sequence Red=Cloning site Green=Tags(s)

MELSDANLQTLTEYLKKTLDPDPAIRRPAAEKFLSVVEGNQNYPLLLLTLLEKSQDNVIKVCASVTFKNYI  
KRNWRIVEDEPNKICEADRVAIKANIVHMLSSPEQIQKQLSDAISIGREDFPQKWPDLLTEMVNRFS  
GDFHVINGVLRTAHSLFKRYRHEFKSNELWTEIKLVDAFALPLTNLFKATIELCSTHANDASALRILFS  
SLILISKLFYSLNFQDLPEFFEDNMETWMNMFHTLLTLDNKLLQTDDEEEAGLLELLKSKICDAAALYAQ  
KYDEEFQRYLPRFVTAIWNLVTTGQEVKYDLLVSNAIQFLASVCERPHYKNLFEDQNTLTSICEKVIVP  
NMEFRAADEEAFEDNSEEYIRRDLGSDIDTRRAACDLVRGLCKFFEGPVTGIFSGYVNSMLQEYAKNP  
SVNWKHKDAAIYLVTSASKAQTKHGITQANELVNLTEFFVNHILPDLK SANVNEFPVLKADGIKYIMI  
FRNQVPKEHLLVSIPLLINHLQAESIVVHTYAAHALERLFTMRGPNNATLFTA AEIAPFVEILLTNLFKA  
LTLPGSSENEYIMKAIMRSFSLQEAIIPIYIPTLITQLTQKLLAVSKNPSKPHFNHYMFEAICLSIRITC  
KANPAAVVNFEEALFLVFTEILQNDVQEFIPYVFQVMSLLETHKNDIPSSYMA LFPHLQPVLWERTGN  
IPALVRLQLAFLERGSNTIASAAADKIPGLLGVFQKLIASKANDHQGFYLLNSII EHMPPESVDQYRQKI  
FILLFQRLQNSKTTKFKSFLVFINLYCIKYGALALQEIFDGIQPKMFGMVLEKII IPEIQKVSNGVEKK  
ICAVGITKLLTECPPMMDTEYTKLWTPLLQSLIGLFELPEDDTPDEEHFIDIEDTPGYQTAFS QLAFAG  
KKEHDPVGMVNNPKIH LAQSLHKLSTACPRVPSMVSTSLNAEALQYLQGYLQAASVTL

TRTRPLEQKLISEEDLAANDILDYKDDDDKV

Tag:	C-Myc/DDK
Purity:	> 80% as determined by SDS-PAGE and Coomassie blue staining
Concentration:	>0.05 µg/µL as determined by microplate BCA method
Labeling Method:	Labeled with [U- <sup>13</sup> C <sub>6</sub> , <sup>15</sup> N <sub>4</sub> ]-L-Arginine and [U- <sup>13</sup> C <sub>6</sub> , <sup>15</sup> N <sub>2</sub> ]-L-Lysine
Buffer:	25 mM Tris-HCl, 100 mM glycine, pH 7.3
Storage:	Store at -80°C. Avoid repeated freeze-thaw cycles.
Stability:	Stable for 3 months from receipt of products under proper storage and handling conditions.



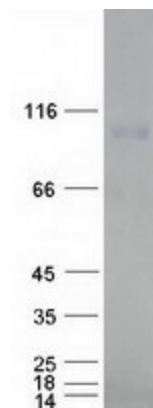
[View online »](#)

RefSeq: [NP\\_001307](#)  
RefSeq Size: 3627  
RefSeq ORF: 2913  
Synonyms: CAS; CSE1; XPO2  
Locus ID: 1434  
UniProt ID: [P55060](#), [A0A384NKW7](#)  
Cytogenetics: 20q13.13

**Summary:** Proteins that carry a nuclear localization signal (NLS) are transported into the nucleus by the importin-alpha/beta heterodimer. Importin-alpha binds the NLS, while importin-beta mediates translocation through the nuclear pore complex. After translocation, RanGTP binds importin-beta and displaces importin-alpha. Importin-alpha must then be returned to the cytoplasm, leaving the NLS protein behind. The protein encoded by this gene binds strongly to NLS-free importin-alpha, and this binding is released in the cytoplasm by the combined action of RANBP1 and RANGAP1. In addition, the encoded protein may play a role both in apoptosis and in cell proliferation. Alternatively spliced transcript variants have been found for this gene. [provided by RefSeq, Jan 2012]

**Protein Families:** Druggable Genome

### Product images:



Coomassie blue staining of purified CSE1L protein (Cat# [TP311478]). The protein was produced from HEK293T cells transfected with CSE1L cDNA clone (Cat# [RC211478]) using MegaTran 2.0 (Cat# [TT210002]).