

Product datasheet for PH311435

AZI2 (NM_022461) Human Mass Spec Standard

Product data:

Product Type:	Mass Spec Standards
Description:	AZI2 MS Standard C13 and N15-labeled recombinant protein (NP_071906)
Species:	Human
Expression Host:	HEK293
Expression cDNA Clone or AA Sequence:	RC211435
Predicted MW:	44.8 kDa
Protein Sequence:	>RC211435 representing NM_022461 Red=Cloning site Green=Tags(s)
	MDALVEDDICILNHEKAHKRDTVTPVSIYSGDESVAHFALVTAYEDIKKRLKDSEKENSLLKKRIRFLE EKLIARFEEETSSVGREQVNKAYHAYREVCIDRNLKSKLDKMNKDNSESLKVLNEQLQSKEVELLQLRT EVETQQVMRNLNPPSSNWEVEKLSCDLKIHGLEQELELMRKECSDLKIELQKAKQTPYQEDNLKSRDLQ KLSISSDNMQHAYWELKREMSNLHLVTQVQAELLRKLKTSTAIKKACAPVGCSEDLGRDSTKLHLMNFTA TYTRHPPLLPNGKALCHTTSSPLPGDVKVLSEKAILQSWTDNERSIPNDGTCFQEHSYGRNSLEDNSWV FPSPPKSSETAFGETKTKTLPLPNLPPLHYLDQHNQNCLYKN
	TRTRPLEQKLISEEDLAANDILDYKDDDDKV
Tag:	C-Myc/DDK
Purity:	> 80% as determined by SDS-PAGE and Coomassie blue staining
Concentration:	>0.05 µg/µL as determined by microplate BCA method
Labeling Method:	Labeled with [U- ¹³ C ₆ , ¹⁵ N ₄]-L-Arginine and [U- ¹³ C ₆ , ¹⁵ N ₂]-L-Lysine
Buffer:	25 mM Tris-HCl, 100 mM glycine, pH 7.3
Storage:	Store at -80°C. Avoid repeated freeze-thaw cycles.
Stability:	Stable for 3 months from receipt of products under proper storage and handling conditions.
RefSeq:	NP_071906
RefSeq Size:	3113
RefSeq ORF:	1176
Synonyms:	AZ2; NAP1; TILP
Locus ID:	64343



[View online »](#)

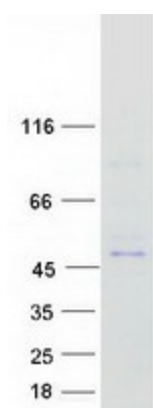
UniProt ID: [Q9H6S1](#), [C9JB40](#)

Cytogenetics: 3p24.1

Summary: AZI2, or NAP1, contributes to the activation of NFkB (see MIM 164011)-dependent gene expression by activating IKK-related kinases, such as NAK (TBK1; MIM 604834) (Fujita et al., 2003 [PubMed 14560022]).[supplied by OMIM, Mar 2008]

Protein Pathways: RIG-I-like receptor signaling pathway

Product images:



Coomassie blue staining of purified AZI2 protein (Cat# [TP311435]). The protein was produced from HEK293T cells transfected with AZI2 cDNA clone (Cat# [RC211435]) using MegaTran 2.0 (Cat# [TT210002]).