

## Product datasheet for PH311378

### TBC1D13 (NM\_018201) Human Mass Spec Standard

#### Product data:

Product Type:	Mass Spec Standards
Description:	TBC1D13 MS Standard C13 and N15-labeled recombinant protein (NP_060671)
Species:	Human
Expression Host:	HEK293
Expression cDNA Clone or AA Sequence:	RC211378
Predicted MW:	46.6 kDa
Protein Sequence:	>RC211378 protein sequence Red=Cloning site Green=Tags(s)  MSSLHKSRIADFQDVLKEPSIALEKLRLELSFGIPCEGGLRCLCWKILLNYLPLERASWTSILAKQRELY AQFLREMI IQPGIAKANMGVSREDVTFEDHPLNPNPDSRWNTYFKDNEVLLQIDKDVRRLCPDISFFQRA TDYPCLLILDQPNEFETLRKRVEQTTLKSQTVARNRSGVTNMSSPHKNSVPSLNEYEVL PNGCEAHWEV VERILFIYAKLNPGIAYVQGMNEIVGPLYTFATDPNSEWKEHAEADTFCTNLMAEIRDNFIKSLDSS QCGITYKMEKVSTLKDKDVELYLKLEQNIKPQFFAFRWL TLLLSQEFLLPDVIRIWDLSL FADDNRDF LLL VCCAMLM LIREQLLEGDFTVNMRLLDYPI TDVCQILQKAKELQDSK  TRTRPLEQKLI SEEDLAANDILDYKDDDDKV
Tag:	C-Myc/DDK
Purity:	> 80% as determined by SDS-PAGE and Coomassie blue staining
Concentration:	>0.05 µg/µL as determined by microplate BCA method
Labeling Method:	Labeled with [U- <sup>13</sup> C <sub>6</sub> , <sup>15</sup> N <sub>4</sub> ]-L-Arginine and [U- <sup>13</sup> C <sub>6</sub> , <sup>15</sup> N <sub>2</sub> ]-L-Lysine
Buffer:	25 mM Tris-HCl, 100 mM glycine, pH 7.3
Storage:	Store at -80°C. Avoid repeated freeze-thaw cycles.
Stability:	Stable for 3 months from receipt of products under proper storage and handling conditions.
RefSeq:	<u>NP_060671</u>
RefSeq Size:	3919
RefSeq ORF:	1200
Locus ID:	54662
UniProt ID:	<u>Q9NVG8, A0A024R8C8, B3KNG3</u>

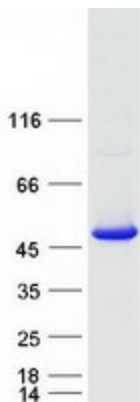


[View online »](#)

Cytogenetics: 9q34.11

Summary: Acts as a GTPase-activating protein for RAB35. Together with RAB35 may be involved in regulation of insulin-induced glucose transporter SLC2A4/GLUT4 translocation to the plasma membrane in adipocytes.[UniProtKB/Swiss-Prot Function]

### Product images:



Coomassie blue staining of purified TBC1D13 protein (Cat# [TP311378]). The protein was produced from HEK293T cells transfected with TBC1D13 cDNA clone (Cat# [RC211378]) using MegaTran 2.0 (Cat# [TT210002]).