

## Product datasheet for PH311375

### Glycogen synthase 2 (GYS2) (NM\_021957) Human Mass Spec Standard

#### Product data:

Product Type:	Mass Spec Standards
Description:	GYS2 MS Standard C13 and N15-labeled recombinant protein (NP_068776)
Species:	Human
Expression Host:	HEK293
Expression cDNA Clone or AA Sequence:	RC211375
Predicted MW:	81 kDa
Protein Sequence:	>RC211375 protein sequence Red=Cloning site Green=Tags(s)
	MLRGRSLSVTSLGGLPQWEVEELPVEELLLFEVAWEVTNKVGGIYTVIQTAKATTADWGENYFLIGPYF EHNMKTQVEQCEPVNDAVRRRAVDAMNKHGCQVHFGRWLIEGSPYVVLFDIGYSAWNLDRWKGDLEACSV GIPYHDREANDMLIFGSLTAWFLKEVTDHADGKYVVAQFHEWQAGIGLILSRARKLPIATIFTTHATLLG RYLCAANIDFYNHLDKFNIDKEAGERQIYHRYCMERASVHCAHVFTTVSEITAIEAEHMLKRKPDVVTN GLNVKKFSAVHEFQNLHAMYKARIQDFVRGHFYGHLDLFDLEKTLFLFIAGRYEFSNKGADIFLESLSRLN FLLRMHKSDITVVVFFIMPAKTNNFNVTLKGQAVRKQLWDVAHSVKEKFGKCLYDALLRGEIPDLNDIL DRDDLTIMKRAIFSTQRQSLPPVTHNMIDDSTDPILSTIRRIGLFNNRTDRVKVILHPEFLSSTSPLLP MDYEEFVRGCHLVGFPSYEPWGYTPAECTVMGIPSVTTNLSGFGCFMQEHVADPTAYGIYIVDRRFRSP DDSCNQLTKFLYGFCKQSRQRRIQRNRTERLSDLLDWRVYLGRIYQYHARHLTSLRAFPDKFHVELTSPPT TEGFKYPRPSSVPPSPSGSQASSPQSSDVEDEVEDERYDEEEEAEERDLNLIKSPFSLSHVPHGKKKLHGE YKN
	TRTRPLEQKLISEEDLAANDILDYKDDDDKV
Tag:	C-Myc/DDK
Purity:	> 80% as determined by SDS-PAGE and Coomassie blue staining
Concentration:	>0.05 µg/µL as determined by microplate BCA method
Labeling Method:	Labeled with [U- 13C6, 15N4]-L-Arginine and [U- 13C6, 15N2]-L-Lysine
Buffer:	25 mM Tris-HCl, 100 mM glycine, pH 7.3
Storage:	Store at -80°C. Avoid repeated freeze-thaw cycles.
Stability:	Stable for 3 months from receipt of products under proper storage and handling conditions.
RefSeq:	<a href="#">NP_068776</a>



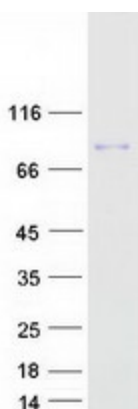
[View online »](#)

RefSeq Size: 3132  
RefSeq ORF: 2109  
Locus ID: 2998  
UniProt ID: [P54840](#)  
Cytogenetics: 12p12.1

**Summary:** The protein encoded by this gene, liver glycogen synthase, catalyzes the rate-limiting step in the synthesis of glycogen - the transfer of a glucose molecule from UDP-glucose to a terminal branch of the glycogen molecule. Mutations in this gene cause glycogen storage disease type 0 (GSD-0) - a rare type of early childhood fasting hypoglycemia with decreased liver glycogen content. [provided by RefSeq, Dec 2009]

**Protein Pathways:** Insulin signaling pathway, Starch and sucrose metabolism

### Product images:



Coomassie blue staining of purified GYS2 protein (Cat# [TP311375]). The protein was produced from HEK293T cells transfected with GYS2 cDNA clone (Cat# [RC211375]) using MegaTran 2.0 (Cat# [TT210002]).