

Product datasheet for PH311320

KCNE2 (NM_172201) Human Mass Spec Standard

Product data:

Product Type:	Mass Spec Standards
Description:	KCNE2 MS Standard C13 and N15-labeled recombinant protein (NP_751951)
Species:	Human
Expression Host:	HEK293
Expression cDNA Clone or AA Sequence:	RC211320
Predicted MW:	14.5 kDa
Protein Sequence:	>RC211320 protein sequence Red=Cloning site Green=Tags(s) MSTLSNFTQTLEDVFRRIFITYMDNWRQNTTAEQEALQAKVDAENFYVILYLMVMIGMFSFIIVAILVS TVKSKRREHSNDPYHQYIVEDWQEYKYSQILNLEESKATIHENIGAAGFKMSP TRTRPLEQKLISEEDLAANDILDYKDDDDKV
Tag:	C-Myc/DDK
Purity:	> 80% as determined by SDS-PAGE and Coomassie blue staining
Concentration:	>0.05 µg/µL as determined by microplate BCA method
Labeling Method:	Labeled with [U- 13C6, 15N4]-L-Arginine and [U- 13C6, 15N2]-L-Lysine
Buffer:	25 mM Tris-HCl, 100 mM glycine, pH 7.3
Storage:	Store at -80°C. Avoid repeated freeze-thaw cycles.
Stability:	Stable for 3 months from receipt of products under proper storage and handling conditions.
RefSeq:	NP_751951
RefSeq Size:	809
RefSeq ORF:	369
Synonyms:	ATFB4; LQT5; LQT6; MIRP1
Locus ID:	9992
UniProt ID:	Q9Y6J6
Cytogenetics:	21q22.11



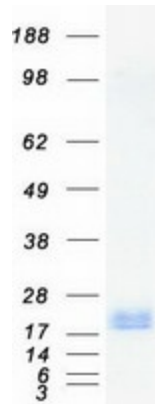
[View online »](#)

Summary:

Voltage-gated potassium (Kv) channels represent the most complex class of voltage-gated ion channels from both functional and structural standpoints. Their diverse functions include regulating neurotransmitter release, heart rate, insulin secretion, neuronal excitability, epithelial electrolyte transport, smooth muscle contraction, and cell volume. This gene encodes a member of the potassium channel, voltage-gated, isk-related subfamily. This member is a small integral membrane subunit that assembles with the KCNH2 gene product, a pore-forming protein, to alter its function. This gene is expressed in heart and muscle and the gene mutations are associated with cardiac arrhythmia. [provided by RefSeq, Jul 2008]

Protein Families:

Druggable Genome, Transmembrane

Product images:

Coomassie blue staining of purified KCNE2 protein (Cat# [TP311320]). The protein was produced from HEK293T cells transfected with KCNE2 cDNA clone (Cat# [RC211320]) using MegaTran 2.0 (Cat# [TT210002]).