

Product datasheet for PH311315

CPO (NM_173077) Human Mass Spec Standard

Product data:

Product Type:	Mass Spec Standards
Description:	CPO MS Standard C13 and N15-labeled recombinant protein (NP_775100)
Species:	Human
Expression Host:	HEK293
Expression cDNA Clone or AA Sequence:	RC211315
Predicted MW:	42.6 kDa
Protein Sequence:	>RC211315 protein sequence Red=Cloning site Green=Tags(s) MKPLLETLYLLGMLVPGGLGYDRSLAQHRQEIVDKSVSPWSLETYSYNIYHPMGEIYEWREISEKYKEV VTQHFLGVTYETHPIYYLKISQPSGNPKKIWMDCGIHAREWIAPAFCCQWFVKEILQNHKDNSRIRKLLR NLDFYVLPVNLIDGYIYTWTDLWRKSRSPHNGTCFGTDLNRRNFNASWCSIGASRNCQDQTCGTGPV SEPETKAVASFIESKKDDILCFLTMHSGQLILTPYGYTKNKSSNHPMIQVGQKAANALKAKYGTNYRV GSSADILYASSGSSRDWARDIGIPFSYTFELRDSGTYGFVLEPAQIQPTCEETMEAVLSVLDVVYAKHWH SDSAGRVTSATMLLGLLVSCMSLL TRTRPLEQKLISEEDLAANDILDYKDDDDKV
Tag:	C-Myc/DDK
Purity:	> 80% as determined by SDS-PAGE and Coomassie blue staining
Concentration:	>0.05 µg/µL as determined by microplate BCA method
Labeling Method:	Labeled with [U- ¹³ C ₆ , ¹⁵ N ₄]-L-Arginine and [U- ¹³ C ₆ , ¹⁵ N ₂]-L-Lysine
Buffer:	25 mM Tris-HCl, 100 mM glycine, pH 7.3
Storage:	Store at -80°C. Avoid repeated freeze-thaw cycles.
Stability:	Stable for 3 months from receipt of products under proper storage and handling conditions.
RefSeq:	<u>NP_775100</u>
RefSeq Size:	1209
RefSeq ORF:	1122
Locus ID:	130749
UniProt ID:	<u>Q8IVL8</u>



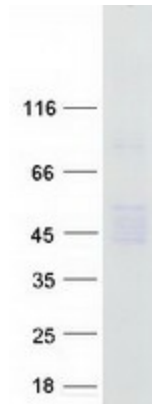
[View online »](#)

Cytogenetics: 2q33.3

Summary: This gene is a member of the metalloprotease gene family. [provided by RefSeq, Jan 2011]

Protein Families: Druggable Genome, Protease, Secreted Protein

Product images:



Coomassie blue staining of purified CPO protein (Cat# [TP311315]). The protein was produced from HEK293T cells transfected with CPO cDNA clone (Cat# [RC211315]) using MegaTran 2.0 (Cat# [TT210002]).