

Product datasheet for PH311313

MBD3L1 (NM_145208) Human Mass Spec Standard

Product data:

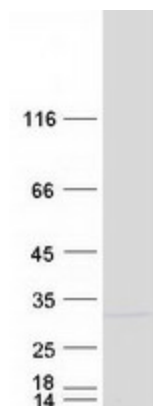
Product Type:	Mass Spec Standards
Description:	MBD3L1 MS Standard C13 and N15-labeled recombinant protein (NP_660209)
Species:	Human
Expression Host:	HEK293
Expression cDNA Clone or AA Sequence:	RC211313
Predicted MW:	21.6 kDa
Protein Sequence:	>RC211313 protein sequence Red=Cloning site Green=Tags(s) MAKSSQRKQKQDCVNQCKSKPGLSTSIPLRMSSYTFKRPVTRITPHPGNEVRYHQWEESELEKPPQVCWQRR LQGLQAYSSAGELSSITDLANTLQKLVPSTGGSLLEDLASGLEHSCMPHLACSSDAVEIIPAEGVGIS QLLCKQFLVTEEDIRKQEGKVKTVRERLALIALADGLANEAEKVRDQEGCPEKR TRTRPLEQKLISEEDLAANDILDYKDDDDKV
Tag:	C-Myc/DDK
Purity:	> 80% as determined by SDS-PAGE and Coomassie blue staining
Concentration:	>0.05 µg/µL as determined by microplate BCA method
Labeling Method:	Labeled with [U- ¹³ C ₆ , ¹⁵ N ₄]-L-Arginine and [U- ¹³ C ₆ , ¹⁵ N ₂]-L-Lysine
Buffer:	25 mM Tris-HCl, 100 mM glycine, pH 7.3
Storage:	Store at -80°C. Avoid repeated freeze-thaw cycles.
Stability:	Stable for 3 months from receipt of products under proper storage and handling conditions.
RefSeq:	<u>NP_660209</u>
RefSeq Size:	748
RefSeq ORF:	582
Synonyms:	MBD3L
Locus ID:	85509
UniProt ID:	<u>Q8WWY6</u>


[View online »](#)

Cytogenetics: 19p13.2

Summary: This gene encodes a protein that is related to methyl-CpG-binding proteins but lacks the methyl-CpG binding domain. The protein is localized to discrete areas in the nucleus, and expression appears to be restricted to round spermatids, suggesting that the protein plays a role in the postmeiotic stages of male germ cell development. [provided by RefSeq, Jul 2008]

Product images:



Coomassie blue staining of purified MBD3L1 protein (Cat# [TP311313]). The protein was produced from HEK293T cells transfected with MBD3L1 cDNA clone (Cat# [RC211313]) using MegaTran 2.0 (Cat# [TT210002]).